

Judging System

DIVE & SYNCHRO

ALGE-TIMING



Important Information

General

Before using your **ALGE-TIMING** device read the complete manual carefully. It is part of the device and contains important information about installation, safety and its intended use. This manual cannot cover all conceivable applications. For further information or in case of problems that are mentioned not at all or not sufficiently detailed, please contact your **ALGE-TIMING** representative. You can find contact details on our homepage www.alge-timing.com

Safety

Apart from the information of this manual, all general safety and accident prevention regulations of the legislator must be considered.

Trained persons must only use the device. The setting-up and installation must only be executed according to the manufacturer's data.

Intended Use

The device must only be used for its intended applications. Technical modifications and any misuse are prohibited because of the risks involved! **ALGE-TIMING** is not liable for damages that are caused by improper use or incorrect operation.

Power supply

The stated voltage on the type plate must correspond to voltage of the power source. Check all connections and plugs before usage. An authorized electrician must replace damaged connection wires immediately. The device must only be connected to an electric supply that has been installed by an electrician according to IEC 60364-1. Never touch the mains plug with wet hands! Never touch live parts!

Cleaning

Please clean the outside of the device only with a smooth cloth. Detergents can cause damage. Never submerge in water, never open or clean with wet cloth. The cleaning must not be carried out by hose or high-pressure (risk of short circuits or other damage).

Liability Limitations

All technical information, data and information for installation and operation correspond to the latest status at time of printing and are made in all conscience considering our past experience and knowledge. Information, pictures and description do not entitle to base any claims. The manufacturer is not liable for damage due to failure to observe the manual, improper use, incorrect repairs, technical modifications, use of unauthorized spare parts. Translations are made in all conscience. We assume no liability for translation mistakes, even if the translation is carried out by us or on our behalf.

Disposal

If a label is placed on the device showing a crossed-out dustbin on wheels (see drawing), the European directive 2002/96/EG applies for this device.

Please get informed about the applicable regulations for separate collection of electrical and electronic waste in your country and do not dispose of the old devices as household waste. Correct disposal of old equipment protects the environment and humans against negative consequences!

Copyright by **ALGE-TIMING GmbH**

All rights reserved. Any duplication, either in full or in part, requires the prior written consent of the copyright holder.



Declaration of Conformity

We declare that the following products comply with the requirements of the listed standards. Parts that we use in the product are CE certificated by the manufacturers and ALGE-TIMING GmbH does not change them.

We, **ALGE-TIMING GmbH**
Rotkreuzstrasse 39
A-6890 Lustenau

Declare under our sole responsibility, that the judging system for diving and synchro:

Timy3 with accessories **WTN, WTN-USB**

is in conformity with the following standard(s) or other normative documents(s):

Safety:	IEC	60950:1999	/	EN	60950:2000
	EN 60335-1:2002 + A11:2004 + A1:2004 + A12:2006 + A2:2006				
EMC:	EN55022:2006+A1:2007				
	EN55024:1998+A1:2001+A2:2003				
	EN61000				
	EN61000 3-3:1995+A1:2001+A2:2005				
					3-2:2006

Additional Information:

The product herewith complies with the requirements of the Low Voltage Directive 73/23/EEC, also the EMC Directive 2004/108/EG and accordingly carries the CE-marking.

Lustenau, 22.04.2020

ALGE-TIMING GmbH



Albert Vetter
(General Manager)

1	Setup of the system	5
1.1	<i>Wireless Setup</i>	5
1.1.1	Synchronized Swimming	5
1.1.2	Diving	6
1.2	<i>Wired Setup</i>	7
1.2.1	Synchronized Swimming	7
1.2.2	Diving	8
1.3	<i>Wireless configuration of the Timy3</i>	9
1.3.1	Settings for the wireless configuration	9
1.3.1.1	Adjusting the Panels and Judges	11
1.3.2	Settings for the wired configuration	14
2	Prepare a competition.....	15
2.1	<i>Synchronized Swimming</i>	15
2.1.1	Program-Settings	15
2.1.1.1	Database.....	15
2.1.1.2	DiveScoreIncrement	15
2.1.1.3	Exchange	15
2.1.1.4	ShowDebugButtons.....	15
2.1.1.5	SynchronizedSwimmingIncrement	15
2.1.1.6	Timy	16
2.1.1.7	UILocale	16
2.1.1.8	Videowall.....	16
2.1.1.9	Videowallxxx.....	16
2.1.1.10	Wtn.....	16
2.1.2	Settings	17
2.1.2.1	Competition Settings	17
2.1.2.2	SynchronizedSwimming Discipline Settings.....	17
2.1.2.3	Report Settings.....	17
2.1.2.4	Officials	17
2.1.3	Events	18
2.1.3.1	Create Event	18
2.1.4	Competitors	19
2.1.5	Duets/Teams	20
2.1.6	Startlist	20
2.1.7	Scoring	21
2.2	<i>Diving</i>	22
2.2.1	Program-Settings	22
2.2.2	Settings	22
2.2.2.1	Competition Settings	22
2.2.2.2	Diving Discipline Settings	22
2.2.2.3	Report Settings.....	22
2.2.2.4	Officials	22
2.2.3	Events	23
2.2.3.1	Create Event	23
2.2.3.2	23
2.2.4	Competitors	24
2.2.5	Teams	25
2.2.6	Startlist	25
2.2.7	Scoring	26

1 Setup of the system

You can use the system either with the integrated WTN as wireless system or as wired solution.

1.1 Wireless Setup

For the wireless setup, you have to choose the program VOTING inside the Timy!
Depending on the amount of judges you are using the setup will look slightly different.

1.1.1 Synchronized Swimming


ALGE TIMING
Judging system for Artistic Swimming with TIMY3 W

Artistic Swimming Team Technical Routine	
RUSSIA	RUS
Viada CHIGIREVA	
Mikhaela KALANCHA	Execution 28.9000
Svetlana KOLESNICHENKO	Impression 28.5000
Lilia NIZAMOVA	Elements 35.5268
Elena PROKOFYEVA	
Alla SHISHKINA	
Maria SHUROCHKINA	92.9268
Gelena TOPILINA	

Diagram illustrating the wireless setup for synchronized swimming:

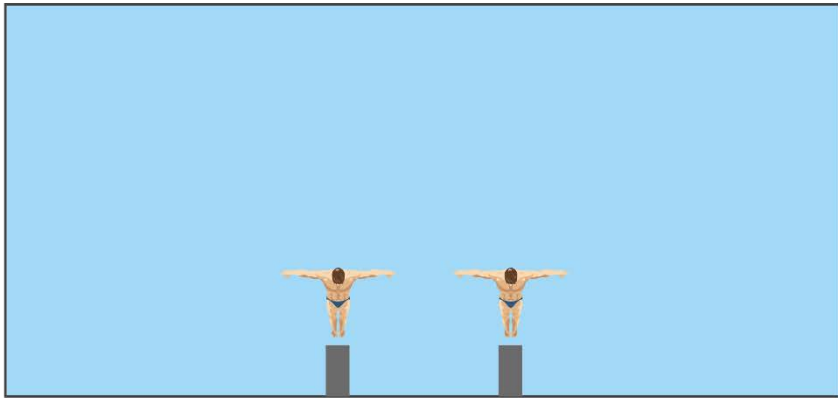
- 15 judges (TIMY3 W) are used for each judge, categorized into three groups: Execution (5 judges), Artistic Impression (5 judges), and Difficulty (5 judges).
- The setup includes a Printer, Meet Management software, a USB-WTN device, and a WTN (Wireless Timing Network) device.

1.1.2 Diving




Judging system for DIVING
TIMY3 W wireless

BLN 2014 Synchronized 3m - MEN FINAL			
1		Ilia ZAKHAROV Evgenii KUZNETSOV	RUS 464.64
2		Patrick HAUSDING Stephan FECK	GER 438.15 26.49
3		Oleksandr GORSHKOVOZOV Illya KVASHA	UKR 433.98 30.66
4		Michele BENEDETTI Giovanni TOCCI	ITA 400.59 64.05
5		Christopher MEARS Jack LAUGHER	GBR 391.98 72.66




Execution




E1 E2 E3 E4 E5 E6

Synchronization




S1 S2 S3 S4 S5


TIMY3 W
for each judge




Printer



Meet
Management



USB-WTN

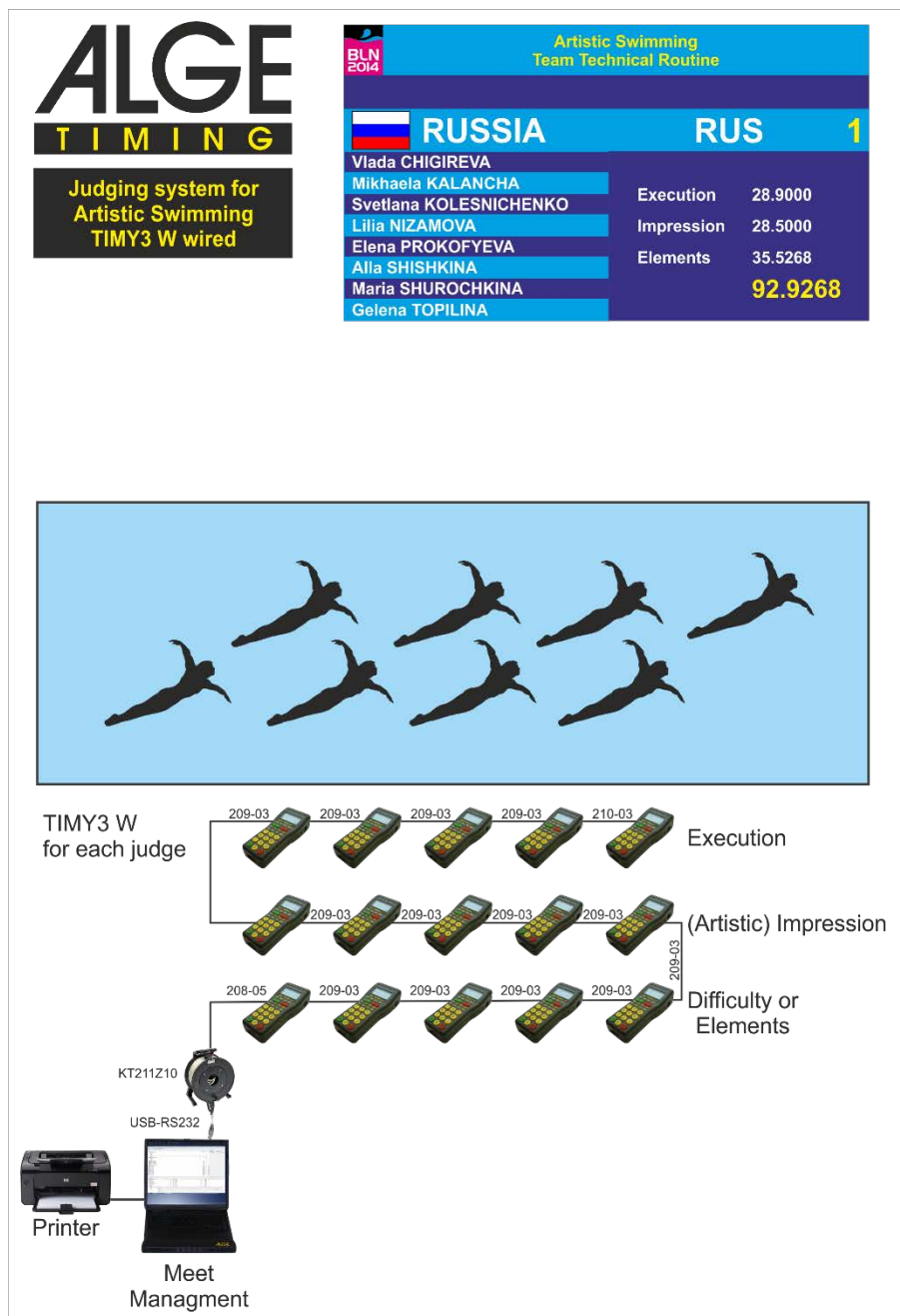


WTN
280-03

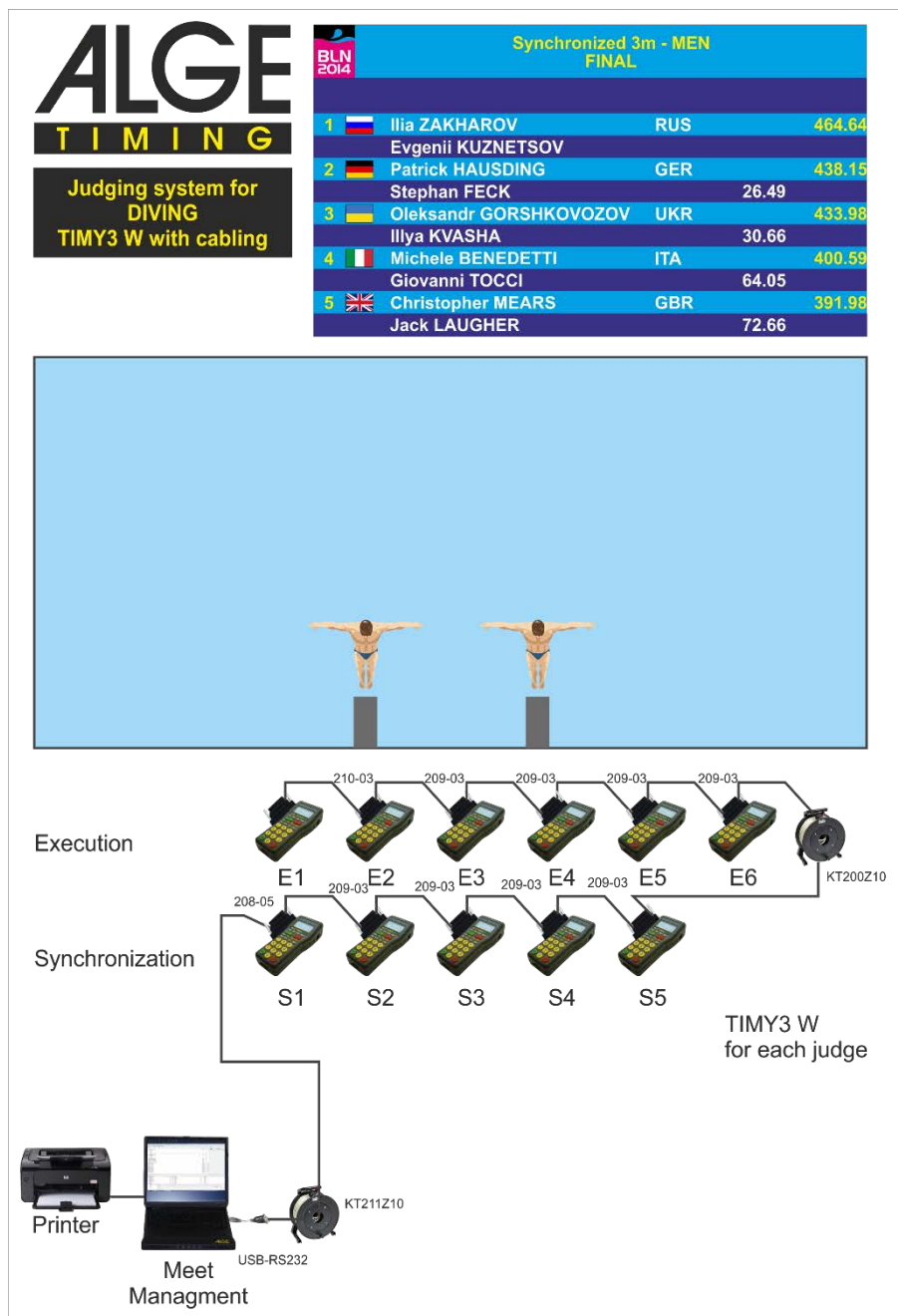
1.2 Wired Setup

For the wired setup, you have to choose the program TERMINAL inside the Timy!
Depending on the amount of judges you are using the setup will look slightly different.

1.2.1 Synchronized Swimming



1.2.2 Diving



1.3 Wireless configuration of the Timy3

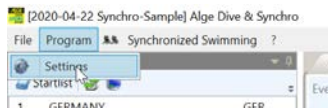
No matter if, you configure the system for Synchronized swimming or Diving, the configuration of the Timy3 is always similar.

Since the configuration of the Timys could be different during different events, you have to configure the Timys right before the competition as shown in the following sample configuration for synchronized swimming.

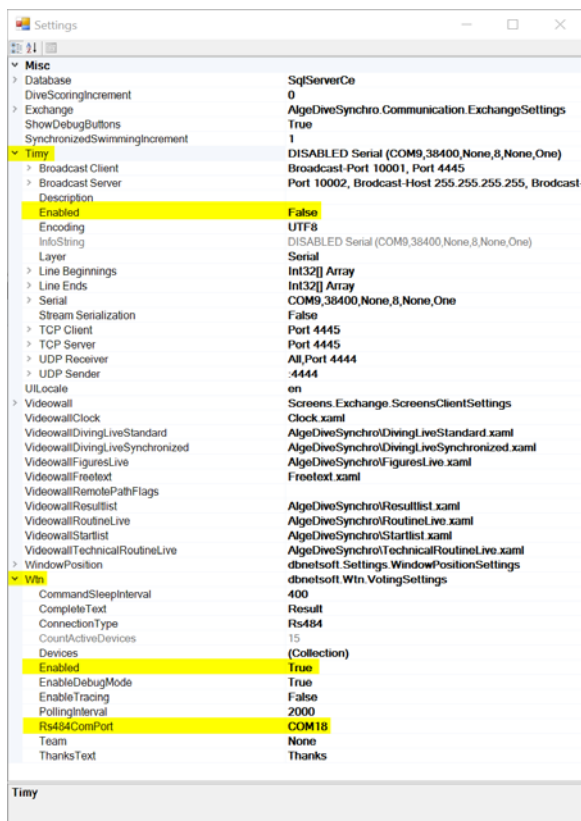
Before you can start with the configuration of the Timys you have to connect the system as shown under point 1.1.1. or 1.1.2.

1.3.1 Settings for the wireless configuration

Under the Point Program-Settings, you can find the settings for the Com-Port connection to the USB-WTN.



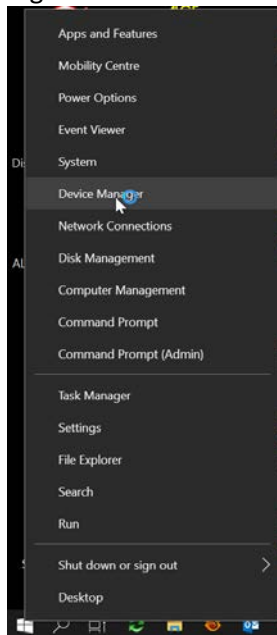
Disable the wired connection to the Timys as shown.



Enable the connection to the WTN as shown.

Choose the correct Com-Port that you can check in the Device Manager of Windows. See as described on the next page!

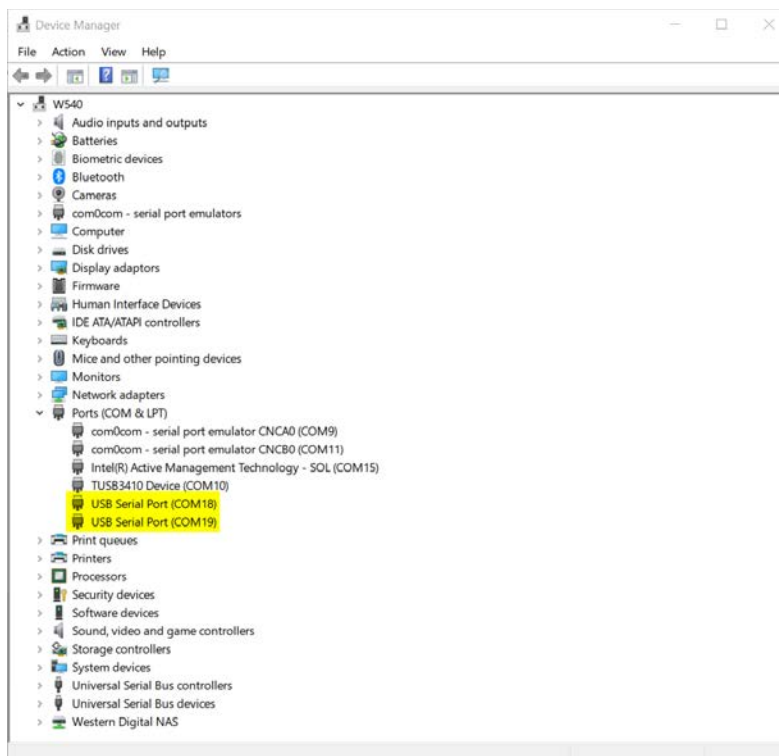
Right-Click on the Start-Icon of Windows and then choose Device Manager.



The RS485 Port from the USB-WTN is Listed in your Device Manager as a simple USB-Serial Port. There are 2 Ports on the USB-WTN, normally the lower Port-Number is the RS485 connection to the WTN and the higher one is the RS232 connection. You have to enter the RS485 Port-Number in the Wtn Settings of the Sync&Dive Software!

In case you can not connect to the WTN you can simply try the other Com-Port in the Settings of the Software.

Important! After adjusting the Com-Port in the Dive&Sync Settings you have to restart the Software!

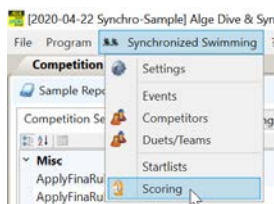


1.3.1.1 Adjusting the Panels and Judges

To be able to configure the Timys you have to choose an event that is already configured completely! We use here our sample database for synchronized swimming with a Free Team Routine Event that is using three Panels with five Judges each.

Important, Use only as much Timys as configured in your event!

If there are different configuration in your events, you have to reconfigure them right before the event is starting!



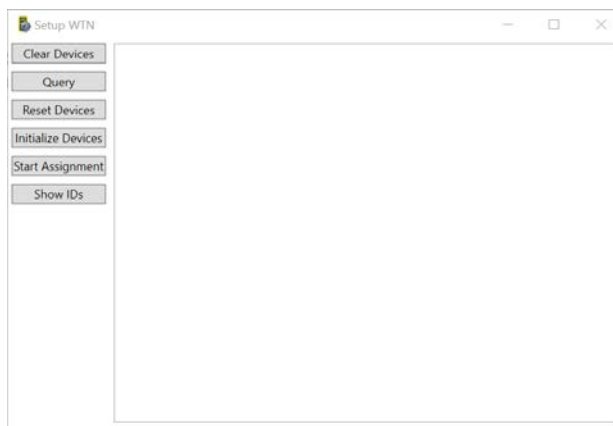
Click on Synchronized Swimming (Diving) and then on Scoring.



Now click on the Button Setup WTN.

A window will popup that is showing the last configuration of the Timys.

Press the button "Clear Devices".



This will delete all the previous configured devices from the list.

Press the button “Query”.

Device ID	Device Name	Version
Master	32	Wtn v20.11
7A-09-00-00-00	10	Timy3 v20.11
2B-0A-00-00-00	11	Timy3 v20.11
80-09-00-00-00	13	Timy3 v20.11
99-09-00-00-00	8	Timy3 v20.11
31-0A-00-00-00	15	Timy3 v20.11
7E-09-00-00-00	4	Timy3 v20.11
85-09-00-00-00	1	Timy3 v20.11
2C-0A-00-00-00	9	Timy3 v20.11
01-10-12-00-00	6	Timy3 v20.11
1E-0A-00-00-00	12	Timy3 v20.11
97-09-00-00-00	7	Timy3 v20.11
50-0A-00-00-00	2	Timy3 v20.11
88-09-00-00-00	14	Timy3 v20.11
1F-0A-00-00-00	3	Timy3 v20.11
95-09-00-00-00	5	Timy3 v20.11

It will list all the connected devices with its previous configuration.

Press the button “Reset Devices” to delete the old configuration.

Device ID	Device Name	Version
Master	32	Wtn v20.11
7A-09-00-00-00	0	Timy3 v20.11
2B-0A-00-00-00	0	Timy3 v20.11
80-09-00-00-00	0	Timy3 v20.11
99-09-00-00-00	0	Timy3 v20.11
31-0A-00-00-00	0	Timy3 v20.11
7E-09-00-00-00	0	Timy3 v20.11
85-09-00-00-00	0	Timy3 v20.11
2C-0A-00-00-00	0	Timy3 v20.11
01-10-12-00-00	0	Timy3 v20.11
1E-0A-00-00-00	0	Timy3 v20.11
97-09-00-00-00	0	Timy3 v20.11
50-0A-00-00-00	0	Timy3 v20.11
88-09-00-00-00	0	Timy3 v20.11
1F-0A-00-00-00	0	Timy3 v20.11
95-09-00-00-00	0	Timy3 v20.11

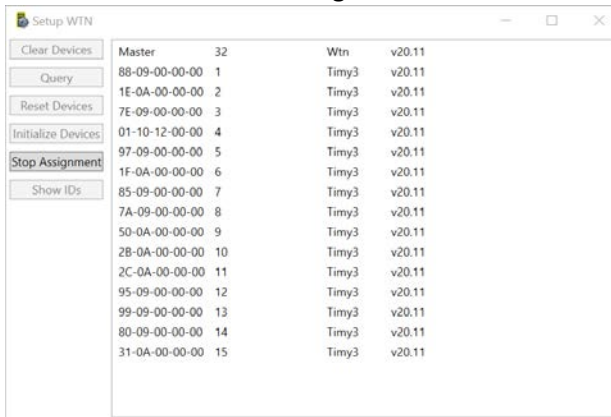
Now you will see the WTN that is the Master and all Timy without a Numbering.

Press the button “Initialize Devices”

Device ID	Device Name	Version
Master	32	Wtn v20.11
97-09-00-00-00	1	Timy3 v20.11
88-09-00-00-00	2	Timy3 v20.11
31-0A-00-00-00	3	Timy3 v20.11
7E-09-00-00-00	4	Timy3 v20.11
2B-0A-00-00-00	5	Timy3 v20.11
80-09-00-00-00	6	Timy3 v20.11
85-09-00-00-00	7	Timy3 v20.11
01-10-12-00-00	8	Timy3 v20.11
50-0A-00-00-00	9	Timy3 v20.11
95-09-00-00-00	10	Timy3 v20.11
99-09-00-00-00	11	Timy3 v20.11
1E-0A-00-00-00	12	Timy3 v20.11
1F-0A-00-00-00	13	Timy3 v20.11
2C-0A-00-00-00	14	Timy3 v20.11
7A-09-00-00-00	15	Timy3 v20.11

This will renumber all the connected Timys.

Press the button “Start Assignment”



Now you will see on each Timy the message “IS P1 J1?”

Confirm on the Timy that is used in Panel 1 by Judge 1 with the red OK button.

On this Timy you have now the Message “OK P1 J1”

All other Timys will now show the Message “IS P1 J2?”

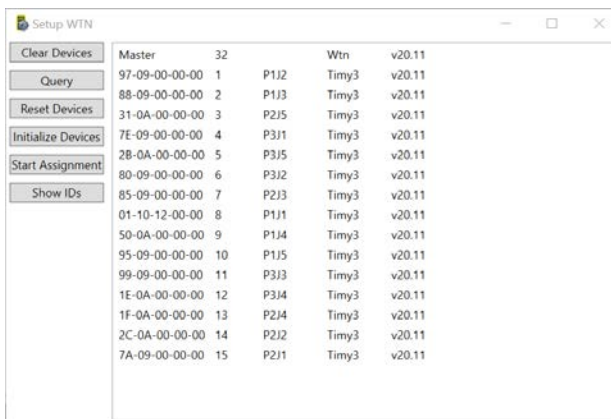
Confirm on the Timy that is in Panel 1 by Judge 2 with the red OK button.

Continue until the last Timy you are using in your configuration is showing the right message.

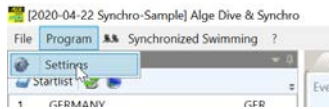
In our sample configuration, we use 15 Timy for Synchronized swimming, so the last Timy will show after the configuration “OK P3 J5”

After all the Timys are assigned, press the button “Stop Assignment”!

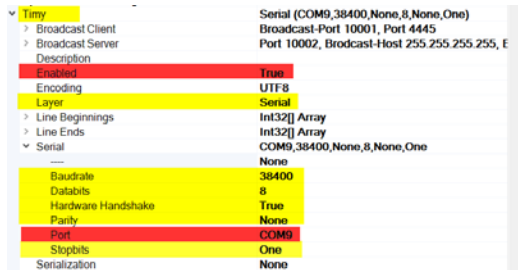
If you press the button, “Show Ids” it will show on the Timys the Panel and Judge Numbers as configured.



1.3.2 Settings for the wired configuration



Under the Point Program-Settings, you can find the settings for the Com-Port connection to the first Timy.



Yellow adjustments as shown.

Red are individual settings!

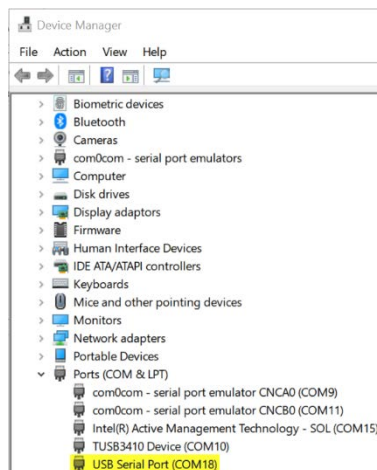
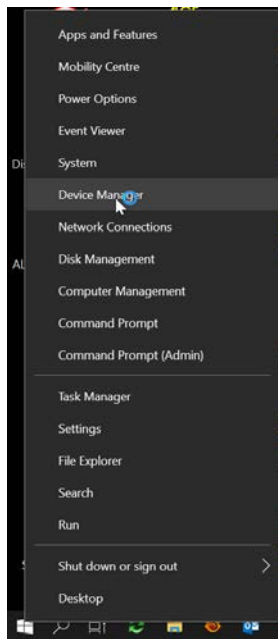
If you use the wired configuration, adjust Enabled as "True".

For wireless configuration "false".

Choose the correct Com-Port that you can check in the Device Manager of Windows as described right below:

Right-Click on the Start-Icon of Windows and then choose Device Manager.

The RS485 Port from the USB-WTN is Listed in your Device Manager as a simple USB-Serial Port.



2 Prepare a competition



After starting the software, it will automatically open the last competition, no matter if it was a diving or synchronized swimming competition.

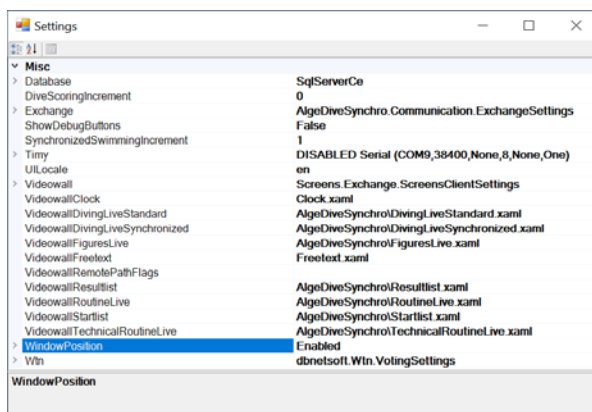
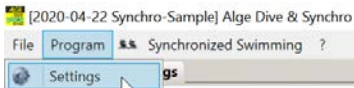
To prepare a new competition click on File-New and then choose the type of competition you would like to create.

2.1 Synchronized Swimming

After creating a new competition by using the function File-New-Synchronized Swimming, you have any empty competition created.

Now you have to enter the competition data as described in the next points.

2.1.1 Program-Settings



2.1.1.1 Database

Do not change this item!

2.1.1.2 DiveScoreIncrement

Defines the smallest step when using WTN devices as judge's terminals in Diving.

No function for Timy3 as judge's terminal!

2.1.1.3 Exchange

For Data-Exchange with other applications. Presently just prepared for upcoming functions!

2.1.1.4 ShowDebugButtons

Only for internal usage!

2.1.1.5 SynchronizedSwimmingIncrement

Defines the smallest step when using WTN devices as judge's terminals in Synchronized Swimming.

No function for Timy3 as judge's terminal!

2.1.1.6 Timy

Here you can adjust the connection settings if you use the wired configuration with the Timy3 in Program Terminal.

For details, see point 1.3.2

2.1.1.7 UILocale

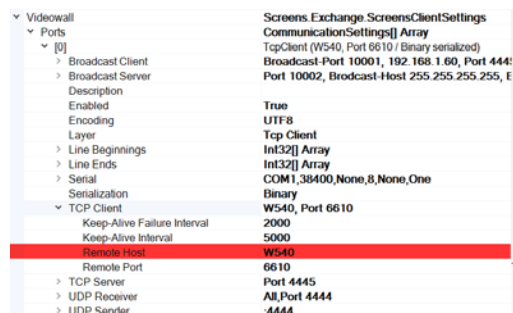
Here you can adjust the language of the Software.

If this field is blank, it will automatically choose the language of the operating system or if not available it will choose English as program language.

Following fixed settings are possible:

en English
de German

2.1.1.8 Videowall



To enable the output on an ALGE-TIMING video screen you need a Controlcomputer which is connected by ethernet to the evaluation computer that runs Sync&Dive Software.

In the Settings you have to enter in the red filed the Computer Name of the Screen-Computer or the IP-Address of this computer as shown right below in the red highlighted line.

2.1.1.9 Videowallxxx

All the following items called VideowallClock, VideowallDivingLiveStandard,....are the Layouts that are used for the different reasons.

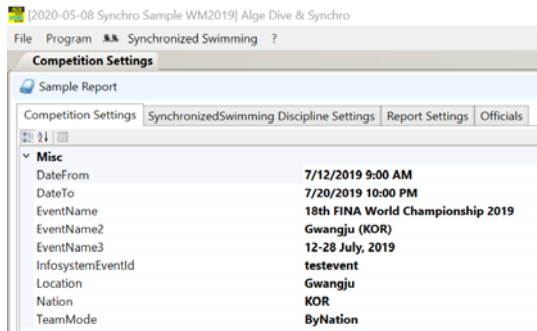
2.1.1.10 Wtn

Here you can adjust the connection settings if you use the wireless configuration with the Timy3 in Program Voting or even WTN devices for the judges.

For details, see point 1.3.1.

2.1.2 Settings

Here you can find general Settings for Synchronized swimming.



- Competition date from – to
- Eventname
- InfoSystem if available
- Location
- Nation
- Teams non-filtered or filtered by Nation or Club

2.1.2.1 Competition Settings

Her you can find some general settings and you can enter the competition name, place and other competition data.

2.1.2.2 SynchronizedSwimming Discipline Settings

You can adjust here the default Judging Value.

If you use Timy3 for Judging adjust here 0,00.

If you have the WTN as Judges Terminals adjust a value of around 7.0 so you can faster change to the end value.

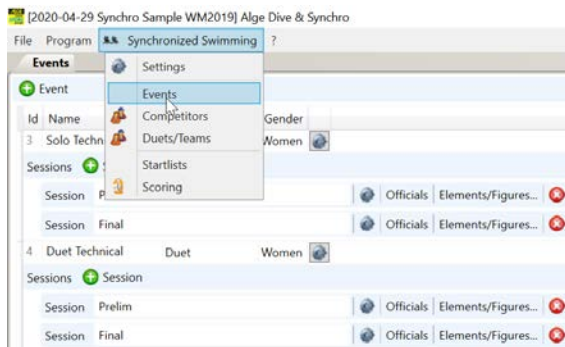
2.1.2.3 Report Settings

Under this point, you can find the settings for the printed reports like margins, logos and so on.

2.1.2.4 Officials

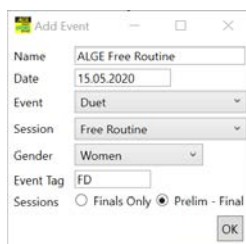
Under this point, you can register all the active officials for the complete competition.

2.1.3 Events



Here you have to create the competition structure with its different events.

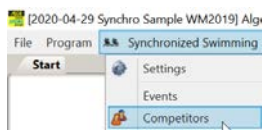
2.1.3.1 Create Event



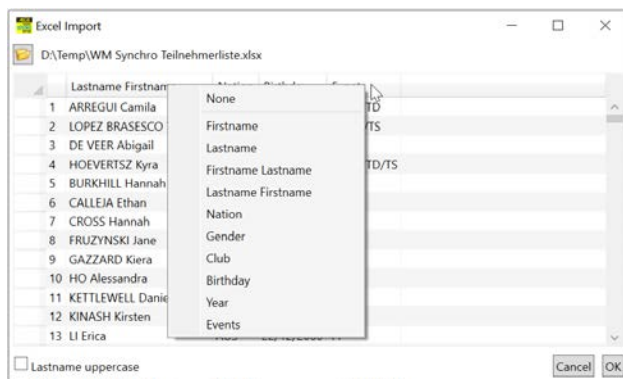
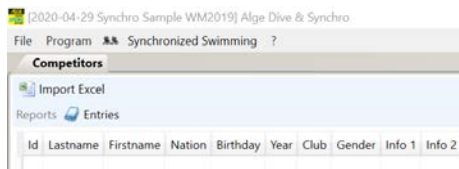
Define the event in this window.

- Eventname
- Eventdate
- Type of Event
- Gender
- Eventtag
- Finals only or with Preliminaries

2.1.4 Competitors



Here you have to enter all competitors that will compete in one of the events. You can either enter the competitors manually or you can import the competitors from an excel file.



In the import function of the software, you can define which column have what kind of information.

To define the different col[Wecken Sie das Interesse Ihrer Leser mit einem passenden Zitat aus dem Dokument, oder verwenden Sie diesen Platz, um eine Kernaussage zu betonen. Um das Textfeld an einer beliebigen Stelle auf der Seite zu platzieren, ziehen Sie es einfach.]

umns simply make a left click on the list

header and choose out of the available fields.

If your excel file has a header please delete the header simply by marking this line in the first field and then press, "delete".

You can also register the competitors here already to the different events.

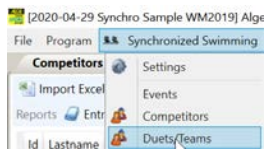
To do this you need a separate column where you enter the Event Tags with / separated.

The Event Tag itself is created automatically when you create an event, if you like to use a customized Tag you can do this simply by changing the actual one.

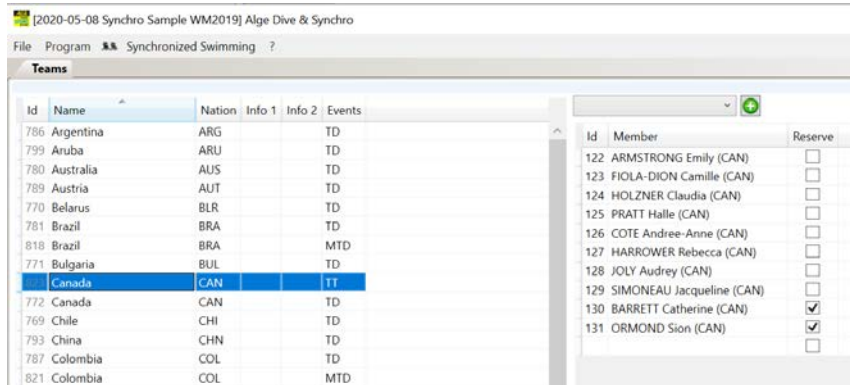
Id	Lastname	Firstname	Nation	Birthdate	Year	Club	Gender	Info 1	Info 2	Events
751	ALVAREZ	Anita	USA	12/2/1996	0		Women			FD/FS/FT/TD/TT
750	YAKHNO	Yelyzaveta	UKR	6/4/1998	0		Women			FC/FD/FS/FT/H/TD/TS/TT
749	SHYMKARENKO	Alina	UKR	11/14/1998	0		Women			FC/FT/H/TT
748	SAVCHUK	Anastasiya	UKR	3/2/1996	0		Women			FC/FD/FT/H/TD/TT
747	REZNIK	Kateryna	UKR	11/20/1995	0		Women			FC/FT/H/TT
746	NARIEZHNA	Yana	UKR	8/29/1999	0		Women			FC/FT/H/TT
745	KOWALENKO	Oleksandra	UKR	5/2/2001	0		Women			FC/FT/H/TT
744	KORNIEIEVA	Daria	UKR	1/10/2001	0		Women			FC/H
743	GRYSHKO	Veronika	UKR	8/31/2000	0		Women			FC/FT/H/TT
742	FIEDINA	Marta	UKR	2/1/2002	0		Women			FC/FD/FS/FT/H/TD/TS/TT
741	APRIELIEVA	Valeria	UKR	2/1/1997	0		Women			FC/H

If you leave this column empty, the competitor is available in any start list configuration.

2.1.5 Duets/Teams

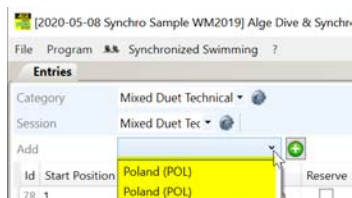


Here you can define which Athletes are participating in which Duets or Teams. Simply enter a team name and then choose the athletes that are in the Team. You can also activate filters that will then only allow members from the same Team or Nation to be chosen as team members.



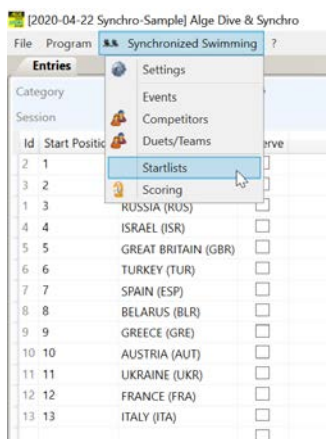
For the Teams it is quite important that you enter the Events so the right Teams will appear in the right events. Otherwise, you will have a problem to see a difference when creating the start list.

If you have for example a Team “Poland” in the Technical Routine and a different Team “Poland” in the “Mixed Technical Duet”, you don’t see any difference between the Teams as it will only show the Teamname.



By using the EventTag you can register the different Team only to the relevant Event.

2.1.6 Startlist



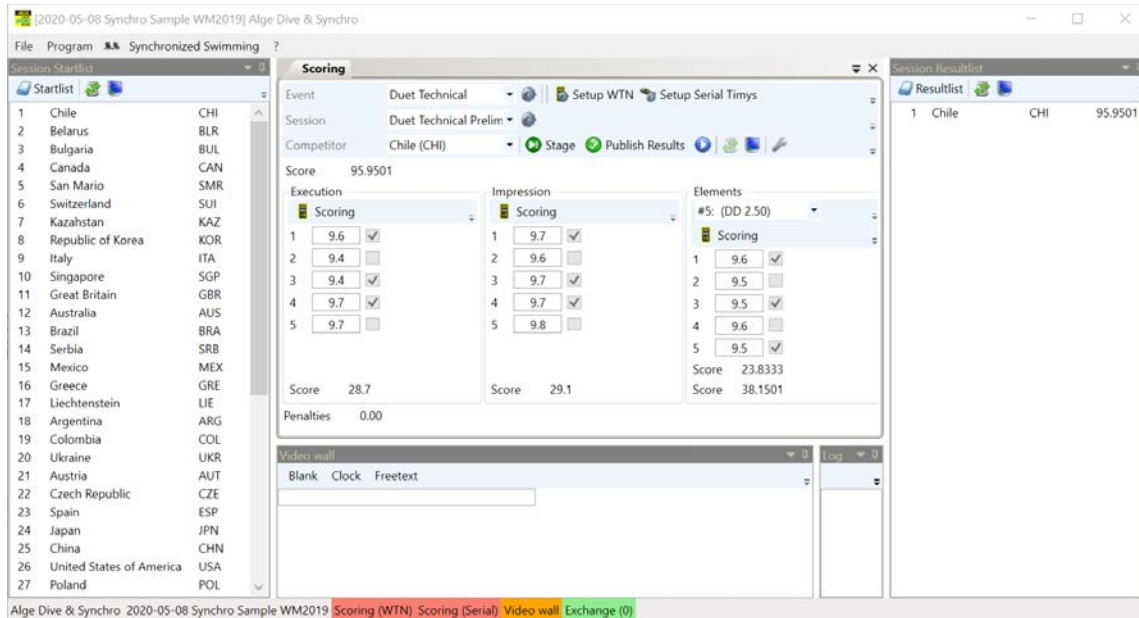
Here you can define the competitors that will compete in the event and the starting order.

If you use the Events Column in the Competitors list, you can automatically create a randomized start list by pressing the button “randomize all”

If you press the button, “randomize list”, it will only resort the competitors that are assigned in the list.

2.1.7 Scoring

In the scoring window you can enter the scores either manually or with the wired or wireless Judging system.



2.2 Diving

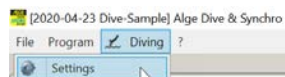
After creating a new competition by using the function File-New-Diving, you have any empty competition created.

Now you have to enter the competition data as described in the next points.

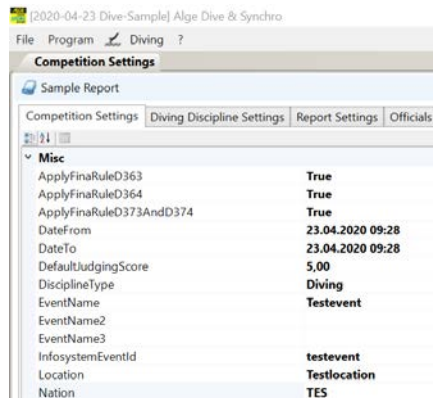
2.2.1 Program-Settings

The Program Settings in diving are identically to the one in Synchronized swimming described already under point 2.1.1.

2.2.2 Settings



Here you can find general Settings for Synchronized swimming.



2.2.2.1 Competition Settings

Her you can find some general settings and you can enter the competition name, place and other relevant data.

2.2.2.2 Diving Discipline Settings

Actually, here is nothing to adjust.

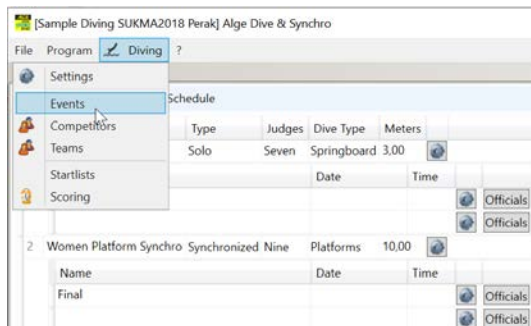
2.2.2.3 Report Settings

Under This point you can find the settings for the printed reports like margins, logos and so on.

2.2.2.4 Officials

Under this point, you can register all the active officials for the complete competition.

2.2.3 Events



Here you have to create the competition structure with its different events.

2.2.3.1 Create Event

Define the event in this window.

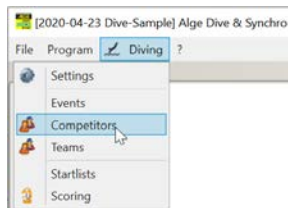
The 'Add Event' dialog box contains the following fields and options:

- Name: Enter the event name here
- Date: [Empty field]
- Type: Solo
- Dive: Springboard Platform
- Meter: 1m
- Gender: Women
- Judges: 5
- Stages: Final Prelim - Final Prelim - Semi - Final Prelim - Semi A/B - Final
- Number Dives: 3
- Maximum DD: 0
- Number Groups: 0

- Eventname
- Eventdate
- Type of Event
- Springboard or Platform
- Height
- Gender
- Amount of Judges
- Finals only or with Preliminaries
- Dive amount and parameters

2.2.3.2

2.2.4 Competitors



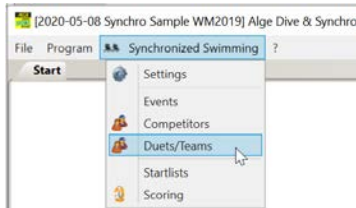
Here you have to enter all competitors that will compete in one of the events.

You can either enter the competitors manually or you can import the competitors from an excel file.

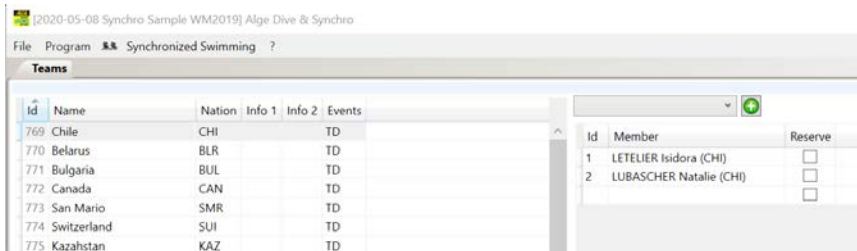
In the import function of the software, you can define which column has what kind of information. To define the different columns simply make a left click in the import routine and choose out of the available fields.

If your excel file has a header please delete the header simply by marking this line in the first field and then press "delete".

2.2.5 Teams



Here you can define which Athletes are participating in which Teams.

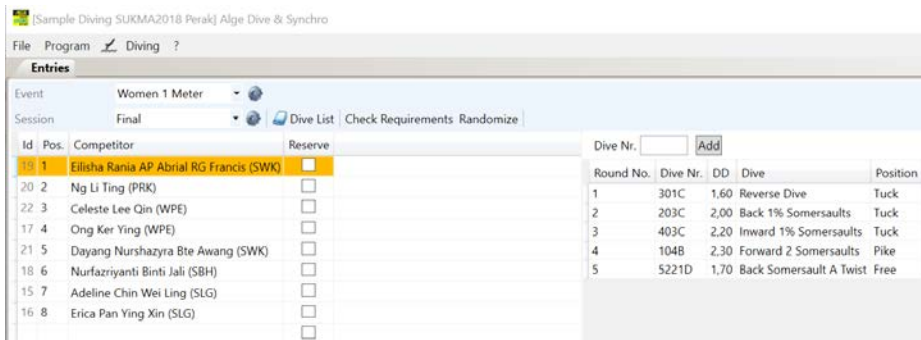


Simply enter a team name and its other data and then choose the athletes that are in the Team. You can also activate filters that will then only allow members from the same Team or Nation to be chosen as team members.

This filter setting you can change as described under point

2.2.6 Startlist

Here you can define the competitors that will compete in the event, their dives and the starting order.



2.2.7 Scoring

In the scoring window you can enter the scores either manually or with the wired or wireless Judging system.

The screenshot shows the 'Scoring' window in the ALGE Dive & Synchro software. The window title is '[Sample Diving SUKMA2018 Perak] Alge Dive & Synchro'. The main area displays the following information:

- Event:** Women 1 Meter
- Session:** Final
- Competitor:** 5 Erica Pan Ying Xin
- Dive Nr.:** 5331D
- DD:** 2.2
- Judges and Scores:**

Judge 1	7.0	<input type="checkbox"/>
Judge 2	8.0	<input checked="" type="checkbox"/>
Judge 3	7.5	<input type="checkbox"/>
Judge 4	7.5	<input checked="" type="checkbox"/>
Judge 5	8.0	<input type="checkbox"/>
Judge 6	8.5	<input type="checkbox"/>
Judge 7	7.5	<input checked="" type="checkbox"/>
Penalties	0.0	
Score	50.60	
Total Score	240.80	
- Buttons:** Change Dive, Failed Dive, Restarted, Flight or Danger, Arm Position, Subtract Penalties

On the left, a 'Startlist' pane shows a list of athletes and their codes. On the right, a 'Resultlist' pane shows a table of results for all athletes in the event.

Rank	Athlete Name	Code	Score
1	Adeline Chin Wei Ling	SLG	243.15
2	Erica Pan Ying Xin	SLG	240.80
3	Ong Ker Ying	WPE	231.45
4	Nurfaziyanti Binti Jali	SBH	207.80
5	Elisha Rania AP Abrial RG Francis	SWK	203.45
6	Celeste Lee Qin	WPE	200.25
7	Dayang Nurshazrya Bte Awang	SWK	164.55
8	Ng Li Ting	PRK	137.55

At the bottom of the window, there is a 'Log' pane with 'Information Warnings Errors' and a 'Clear' button. A 'Video' pane is also visible, currently showing 'Blank'.

Subject to changes

ALGE-TIMING GmbH

Rotkreuzstraße 39

A-6890 Lustenau

Austria

Tel: +43-5577-85966

Fax: +43-5577-85966-4

office@alge-timing.comwww.alge-timing.com