



ALGE

TIMING

THE SPORTS
TIMING EXPERTS

Aquatic Sports



SWIMMING



Based on years of experience in timing the most different sports, ALGE-TIMING has developed selected solutions for timing all kinds of swimming competitions. Thanks to the tough

design and processing only high-quality materials, ALGE-TIMING guarantees reliable results and above average operating time of the system.



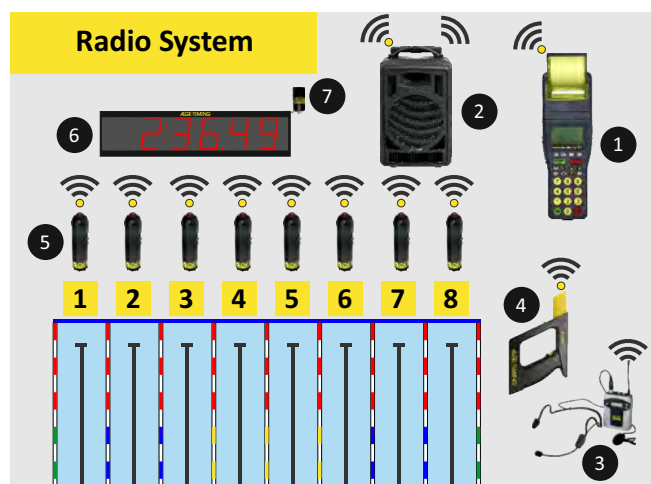
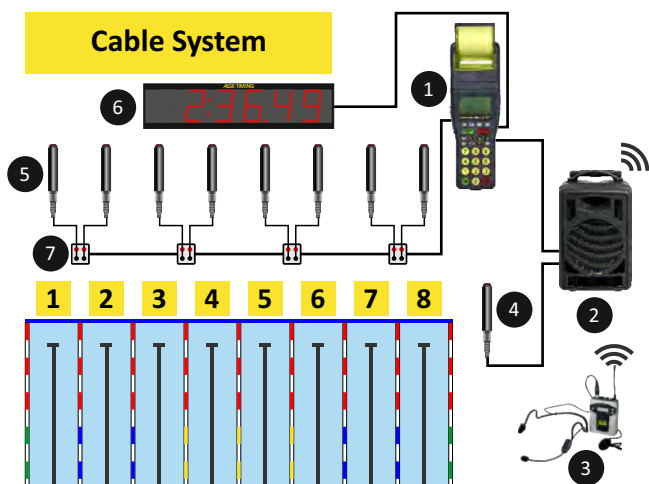
SWIMMING

Semi-Automatic Timing System



The Semi-Automatic Timing System is used at lower level competitions for swimming. It is easy to setup and to operate. Of course the price is as well much lower than Automatic

Timing Systems. ALGE-TIMING offers two different semi-automatic systems, one is wired and the other is a radio system.



- 1 timing device Timy3 WP
- 2 speaker system BANG2
- 3 radio headset BANG-HS
- 4 start push button 023-10
- 5 finish push button 023-02
- 6 display board D-LINE (Time)
- 7 connection cable for 8 lanes MC8-S2

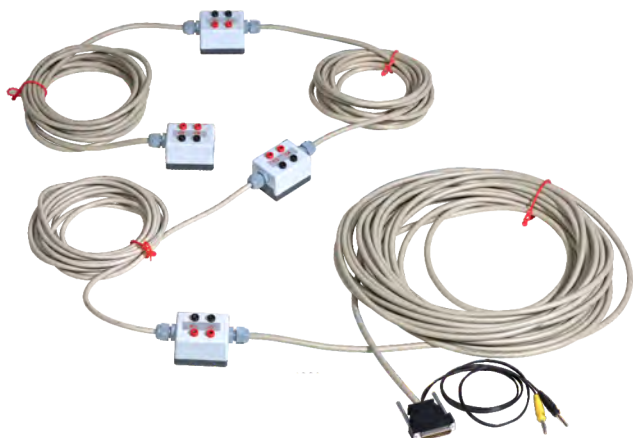
- 1 timing device Timy3 WP
- 2 speaker system BANG2
- 3 radio headset BANG-HS
- 4 radio startgun e-Start W
- 5 radio push button WTN-PB for finish
- 6 display board D-LINE (time)
- 7 radio data receiver for display board WTN-DB

A semi-automatic timing system is a system with manual finish triggering. Each lane is equipped with one push button with its own timing channel. The push buttons are connected via MC8-S2 cable. The start signal is given on the speaker BANG2.

ALGE-TIMING offers a wireless, semi-automatic timing system with one push button WTN-PB for each lane. Each push button has its own timing channel and is equipped with the ALGE-TIMING Wireless Timing Network. This allows wireless timing for up to eight lanes. A display board can be connected at the timing device Timy3 WP.

The cabling for the system is configured as needed. The picture below shows the cabling for a pool with 8 lanes (MC8-S2).

The complete system is very flexible and the setup is very fast, since it does not need cables.



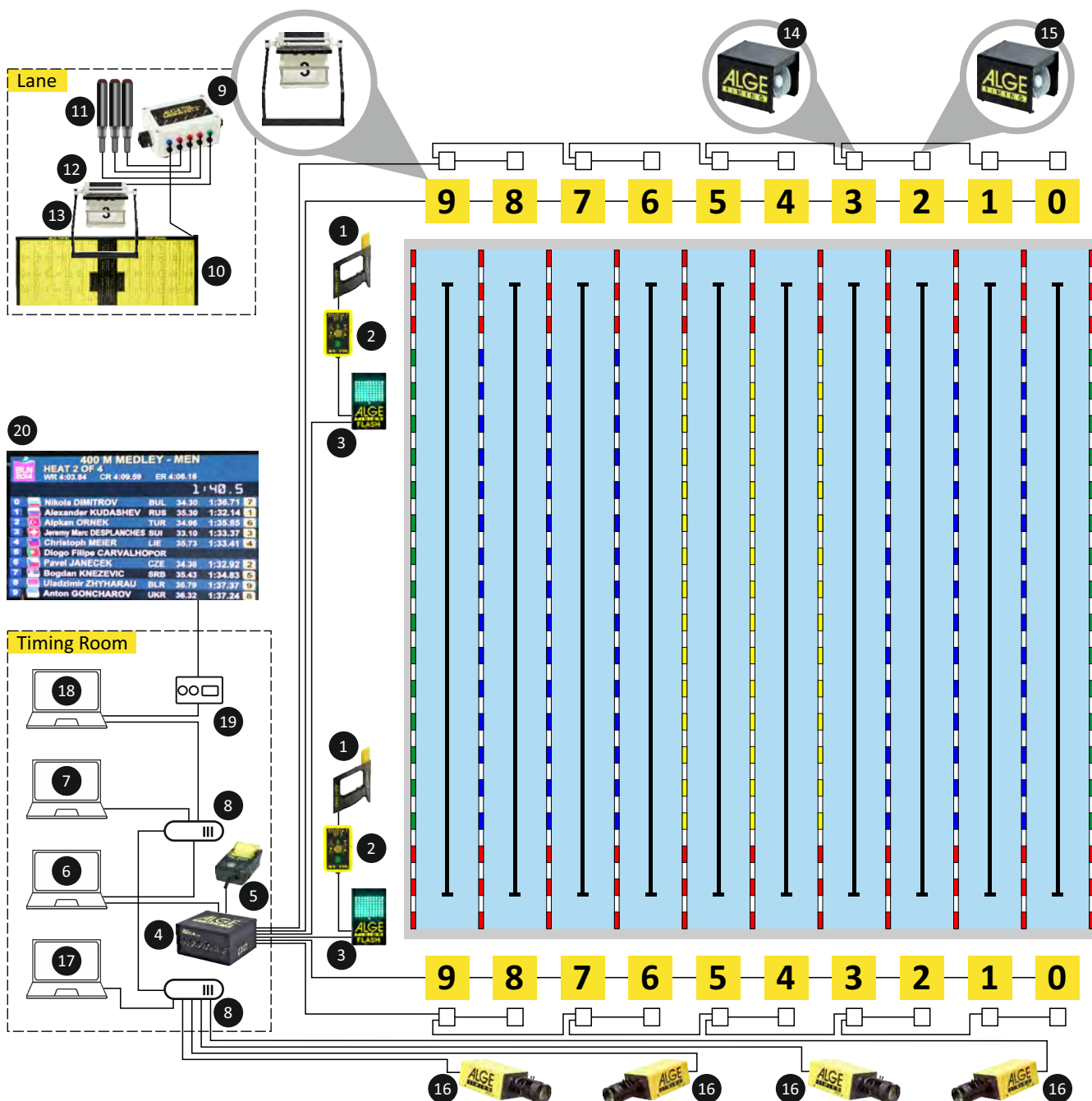


SWIMMING

Fully Automatic Timing System

The fully automatic SwimTime system is equipped with advanced technology that intelligently supports the timekeeper. Thus, the timekeeper can concentrate on the

essentials and execute the events without stress. The shown system is used for large events. Depending on the budget, components can be reduced or deleted.



- | | | | |
|---------------------------|--------------------------|-----------------------------|---------------------------|
| 1 elect. startgun e-Start | 6 PC for timing | 11 push button 023-02 | 16 video backup OPTIC3 |
| 2 start unit SU3 | 7 PC for meet management | 12 starting block SO5 | 17 PC for video backup |
| 3 flash XL | 8 switch with POE+ | 13 backstroke start aid BSA | 18 PC for video wall |
| 4 timing device TM-SWIM | 9 swim terminal SWT3 | 14 speaker active SPA | 19 video wall controller |
| 5 printer P6-8 | 10 touchpad TP2400C | 15 speaker passive SPP | 20 video wall for results |

SWIMMING

Fully Automatic Timing System



SwimTime with TimeManager TM-SWIM

New technologies turn timing into pleasure.

The TM-SWIM was especially designed for the extreme demands in aquatic sports. The TimeManager has an integrated audio amplifier and a backup battery. It combines know-how, modern electronics and the solid ALGE-TIMING design.

All timing functions are executed and stored directly in the

TM-SWIM. The computer is only necessary for registering a competition in the system. The PC is also used for visualizing and controlling the TimeManager. The TM-SWIM executes the heat automatically and at the same time sends the times to the SwimTime PC software. Thus, the user can follow the competition on the easy-to-use operating environment.



Facts of the ALGE-TIMING SwimTime Timing System

- PC based timing system
- USB interface
- user-friendly handling
- control of up to 16 lanes at both sides
- visual and acoustical control of all lanes
- connections for 1 touchpad, 3 push buttons and 1 starting platform per lane (5 independent timing channels per lane and side)
- integrated battery backup, works for 4 hours independently from power supply and PC
- integrated amplifier system
- voice communication between starter and timekeeper via headset
- false start warning on display
- warning for too large a time difference between manual timing and touchpad
- warning for unregistered touches
- fail-safe and robust touchpads
- registering statistical data such as: reaction time, block-off time, duration of pressure to starting platform and touchpads
- conformity: FINA, SSCH, AAU, NCAA and LEN rules



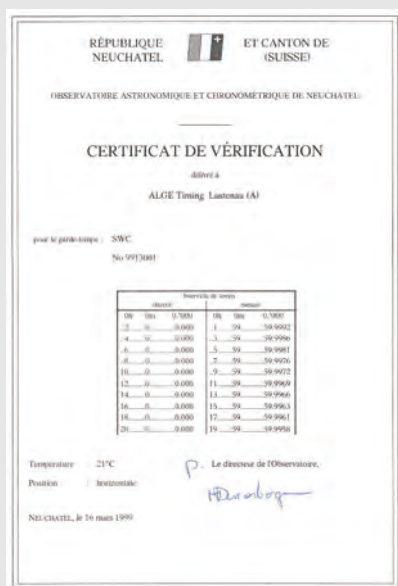
SWIMMING

Fully Automatic Timing System



Technical Data

Measuring range: 23 hours, 59 minutes, 59.9999 seconds
 Time reference: TCXO 10,000 MHz (temperature compensated crystal oscillator)
 Precision: +/- 0.1 ppm (0.00036 s/h)
 Temperature range: -25 °C to +50 °C
 Power supply: internal: 12 V gel-cell rechargeable battery
 external: 100- 240 VAC, 50/60 Hz, optional 12- 18 VDC
 Interfaces: USB interface for PC or video
 RS232 interface for PC or video
 2 x RS232 interface for log printer
 2 x RS232 interface for display board
 RS485 for display board
 Further connections: 2 x timing bus start and turn side
 2 x speaker active
 2 x SU3 (start unit) / FLASH XL start (banana jack)
 audio line in
 audio line out
 microphone
 headset
 audio in
 total volume
 Volume control: microphone
 headset
 audio in
 total volume



SWIM Terminal SWT3

Each lane and side needs one Swim Terminal. All SWT3 are identical and not internally numbered. On switching on, the TM-SWIM automatically recognizes how many lanes are connected to the system and numbers them according to this input.



Each Swim Terminal has five independent channels:

- 1 x touchpad
- 3 x push button
- 1 x relay take-off sensor

Log Printer P6-8

online log of all pulses

- competition and heat number
- competition name
- times (start, starting platform, touchpads, push button)
- times outside a heat are printed in time of day format
- printing speed: 5 lines per second



SWIMMING

Fully Automatic Timing System



SwimTime with TimeManager TM-SWIM

PC software

The ALGE-TIMING PC software SwimTime clearly manages all times and possesses optimal interfaces to all established evaluation software in swimming. By dividing the software into timing and evaluation program (meet management software), the timing can be executed on one PC while the tasks of the race

office (heat classification, list printing etc.) are being carried out on one or more further PCs.

SwimTime is compatible with all current Microsoft Windows versions (Windows XP, Vista, Windows 7, Windows 8 or Windows 10).

Lane	Participant	Club	Reaction Time	Lap Times	Total Time	Touches
1	Andrea Bruder	Schwimmclub Aarefisch Aarau, SUI	+0.79	00:34.34 02:11.62 02:11.73	02:11.62	4
2	Maxime Bradley	Renens-Natation, FRA	+0.80	00:32.14 02:04.12 02:04.20	02:04.12	4
3	Elias Mehrdad	Lausanne Natation, SUI	+0.81	00:32.01 02:00.33 02:00.49	02:00.33	4
4	Jean-Baptiste Febo	CN Plan-les-Ouates, SUI	+0.81	00:29.28 01:54.03 01:54.14	01:54.03	4
5	Marc-Luca Ramsebner	Schwimmklub Bern, SUI	+0.88	00:30.71 01:57.54 01:57.62	01:57.54	4
6	Alexandre Haldemann	Natation Sportive Genève, SUI	+0.88	00:32.26 02:00.63 02:00.64	02:00.63	4
7	Jérémy Desplanches	Genève Natation 1885, SUI	-	00:00.00 00:00.00 00:00.00	00:00.00	0
8			-	00:00.00 00:00.00 00:00.00	00:00.00	0

- 1 menu bar
- 2 competition selection
- 3 participant data
- 4 reaction time turn side
- 5 lane number
- 6 status line
- 7 lap time
- 8 total time
- 9 manual time
- 10 touches
- 11 reaction time start side
- 12 lane with swimmer who did not start
- 13 free lane



The timing software works with clear, animated symbols. This simplifies the operation.

- coordinated with the evaluation
- visualization
- simple operation
- free software updates
- battery backup
- clear logs
- expandable to 16 lanes
- participants' data visible during timing
- many helpful monitoring functions





SWIMMING

Touchpads TP2400C and TP1890C



The complete timing for swimming depends on the reliability of the touchpad TP. The touchpad must withstand the aggressive conditions in the pool. ALGE-TIMING forms a solid frame from stainless steel around the touchpad. This protects the integrated tape switches from damage and optimizes the touchpad for operation in the swimming pool.

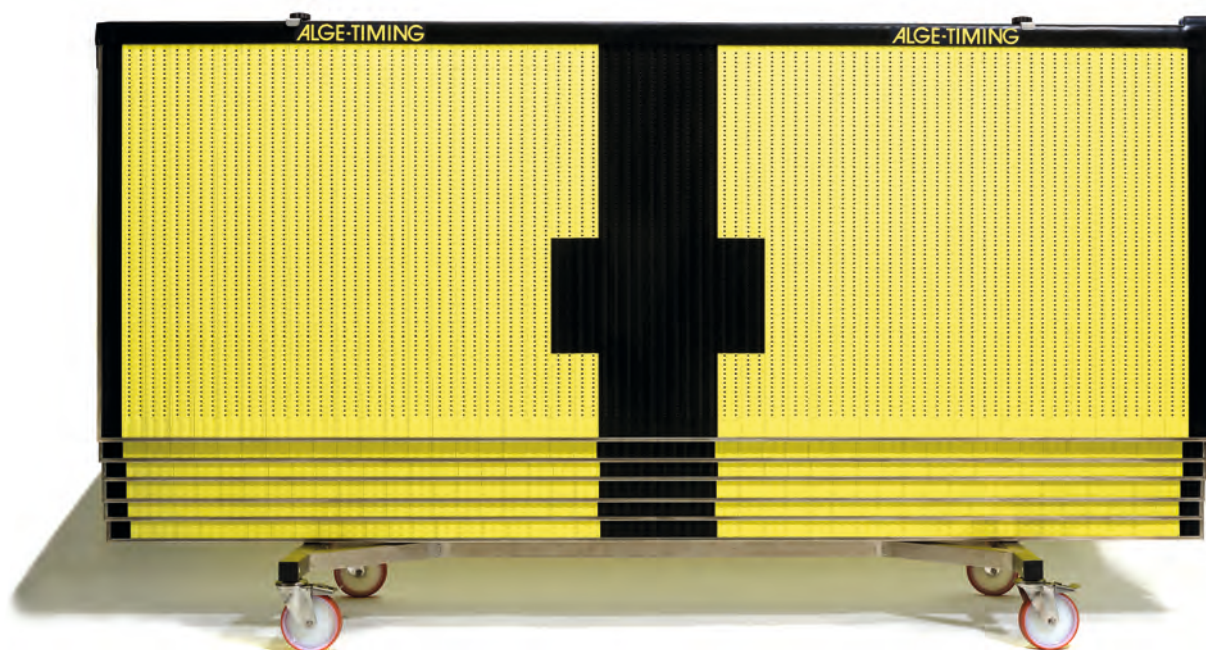
The four tape switches are situated over the complete length of the touchpad. So

wherever the swimmers touchs, it is perfectly triggered. It complies with the rules of FINA, SSCH, AAU, NCAA and LEN.

The innovative and patented touchpads exhibit a surface from pluggable lamellas which guarantee exemplary slip resistance for the swimmers. Many experiments and tests were executed with different materials to reach such an ideal result. The ALGE-TIMING touchpad with small nubs provides for the desired grip.

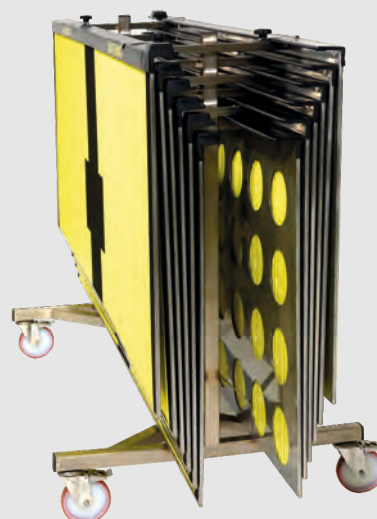
Moreover, every touchpad has hundreds of small holes that allow the water to flow through and produce optimal water current conditions for all lanes.

By applying new materials and a stainless steel casing with holes on the back side, the weight of the touchpads was reduced by about 30 % compared to previous ALGE-TIMING touchpad models.



All advantages at a glance:

- special anti-slip surface for optimal grip
- four tape switches for constant and safe triggering
- no faulty pulses by splash water or waves
- patented water flow-through during the competition provides for fair conditions
- casing from stainless steel 1.4404
- solid construction
- simple banana plug connection with timing system
- compatible with most of the timing systems (NOC)
- two standard models (TP2400C / TP1890C)
- customer-specific dimensions on request
- special transport cart for storing up to 12 touchpads
- complies with: FINA, SSCH, AAU, NCAA and LEN rules



SWIMMING

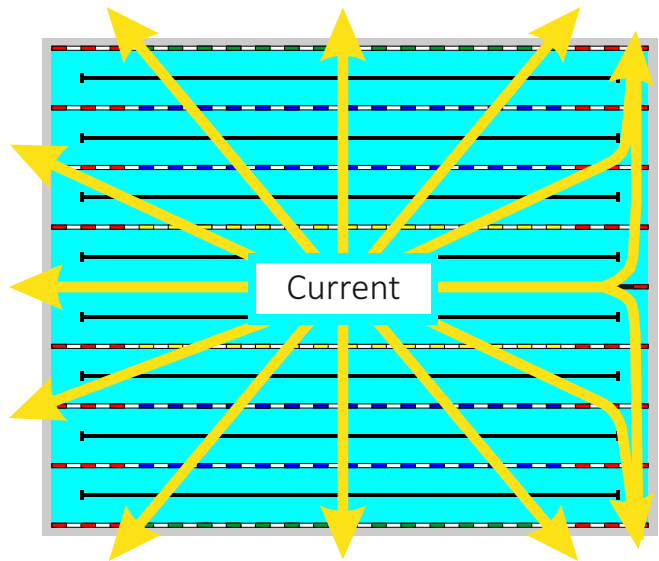
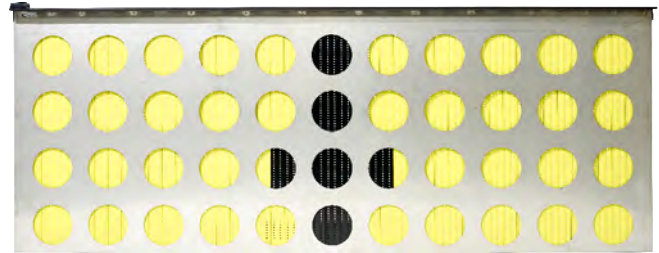
Touchpads TP2400C and TP1890C



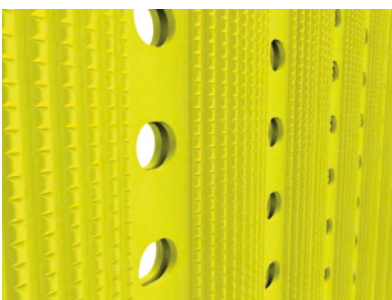
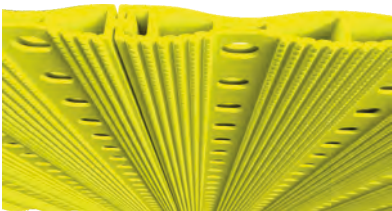
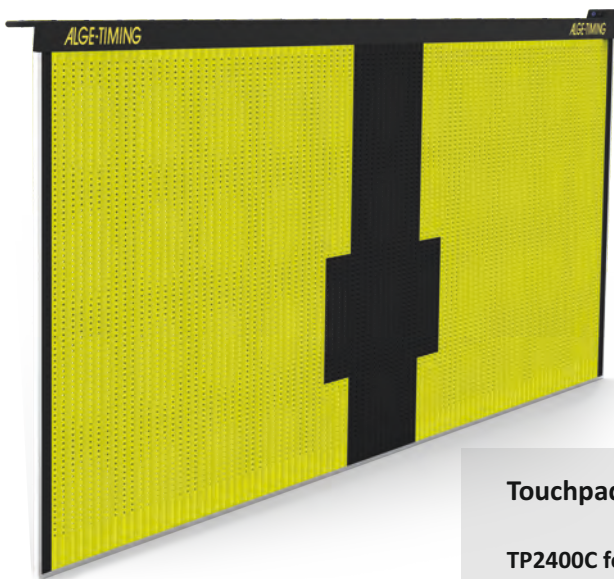
A stainless steel rear plate protects the touchpad from damage (high-quality stainless steel for application in swimming pools).

The secret of the unrivaled slip resistance is the special lamella design by ALGE-TIMING. The lamella has a rough surface with thousands of tiny nubs.

Unlike other touchpads, the water flows through the ALGE-TIMING touchpads and guarantees optimal water current conditions in overflow pools. Other touchpads block the pool current at the ends causing cross flows. They require shutting down the filter system of the pool in order to prevent unfair competition conditions. With the patented construction of the ALGE-TIMING touchpads, fair conditions are ensured for all participating athletes also when operating the filter system during the competition.



On the left, the water current is shown using the new ALGE-TIMING touchpad. The right shows the water current with closed touchpads.



Touchpad Models

TP2400C for swimming pools with lanes of 2.5 m width

stainless steel casing with steel 1.4404 and PCV-lamella (Olympic dimensions)
2,400 x 910 mm, max. 9.5 mm thick in active area, 24.7 kg
94.49 x 35.83 in, max. 0.374 in thick in active area, 54.5 lbs

TP1890C for swimming pools with lanes of 2 m width

stainless steel casing with steel 1.4404 and PVC-lamella
1,890 x 910 mm, max. 9.5 mm thick in active area, 19.5 kg
74.41 x 35.83 in, max. 0.374 in thick in active area, 43 lbs

TP1580C60 for overflow pools without base

stainless steel casing with steel 1.4404 and PVC-lamella
1580 x 610 mm, max. 9.5 mm thick in active area, 11 kg
62.20 x 24.02 in, max. 0.374 in thick in active area, 23.3 lbs

TP914C for Training

stainless steel casing with steel 1.4404 and PVC-lamella
914 x 910 mm, max. 9.5 mm thick in active area, 9.5 kg
62.20 x 35.98 in, max. 0.374 in thick in active area, 21 lbs



All ALGE-TIMING starting platforms and relay take-off sensors has an integrated relay take-off sensor.

It allows to check if the relay take-off is executed correctly during the competition. When the swimmers start, the reaction time can be measured.

Starting Platform SO5

The SO5 is made from plastic (polyethylene) and provides relay take-off times, block-off times or reaction times. The footrest can be adjusted by the swimmer in six different positions and thus enables an optimal track start. When used for public swimming, the footrest can be removed without tools. The SO5 is designed for permanent use in indoor and open air swimming pools.

New: improved surface for ideal grip

Technical Data

Measuring system: integrated sensor for reaction time and jump duration
 Footrest: 6-stage adjustable, removable without tools
 Material: plastic, stainless steel reinforced
 Dimensions: 740 x 560 x 400 mm / 29.1 x 22 x 15.7 in
 Weight: 24 kg / 52.9 lbs
 Complies with: FINA, SSCH, AAU, NCAA and LEN rules

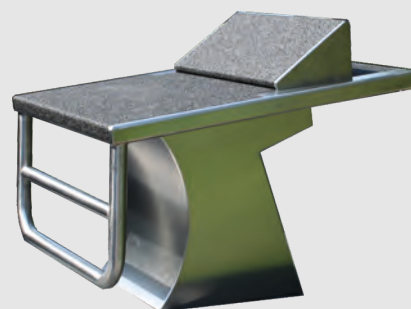


Starting Platform SO4

The SO4 is made from high quality stainless steel 1.4404 and supplies relay exchange times, block-off times or reaction times. The adjustable footrest enables the swimmers to adjust the distance to the front-edge to have the perfect start position for the step-start. For public use you can remove the foot rest without any tools within a few seconds. The SO4 is built for constant use in indoor and outdoor pools.

Technical Data

Measuring system: integrated sensor for reaction time and jump duration
 Footrest: 5-stage adjustable, removable without tools
 Material: stainless steel 1.4004
 Dimensions: 740 x 560 x 400 mm // 29.1 x 22 x 15.7 in
 Weight: 40 kg / 88 lbs
 Complies with: FINA, SSCH, AAU, NCAA and LEN rules





Relay Take-off Sensor SWR7

The SWR7 is made from high-quality stainless steel 1.4404 and provides relay take-off times, block-off times or reaction times. The SWR7 must be fitted to the existing starting platforms. It is fixed to those starting platform using screws. The extraordinarily slip-resistant surface designed by ALGE-TIMING is indestructible and does not change its specifications even after many years of use.

Technical Data

Measuring system: integrated sensor for timing
 Material: stainless steel 1.4404, surface treated
 Dimensions: 740 x 560 x 40 mm / 29.1 x 22 x 15.7 in
 Weight: 26 kg / 57.3 lbs
 Complies with: FINA, SSCH, AAU, NCAA and LEN rules



Relay Take-off Sensor SWR7M

The SWR7 is made from high-quality stainless steel 1.4404 and provides relay take-off times, block-off times or reaction times. The SWR7 must be fitted to the existing starting platforms with a tension belt. The extraordinarily slip-resistant surface designed by ALGE-TIMING is indestructible and does not change its specifications even after many years of use.

Technical Data

Measuring system: integrated sensor for timing
 Material: stainless steel 1.4404, surface treated
 Dimensions: 740 x 560 x 40 mm / 29.1 x 22 x 15.7 in
 Weight: 26 kg / 57.3 lbs
 Complies with: FINA, SSCH, AAU, NCAA and LEN rules



Backstroke Start Aid BSA

The Backstroke Start Aid is fully compatible with the ALGE-TIMING SO3, SO4, and SO5 and with any other brand of starting blocks. Each unit consists in a lower part including a footrest designed to support the swimmer's push at the start and an upper part to hook the assembly to the starting platform. The upper part includes a rotating mechanism to set the BSA to the swimmer's starting position. A return spring allows a "one hand" easy adjustment, even if the athlete is in water. The upper handlebar allows to grab the unit for a quick removal after the start.

Technical Data

Mounting: universal, without tools
 Dimensions: according to FINA; 786 x 10- 1600 (adjustable) x 150 mm
 according to FINA 31 x 0.4 - 63 (adjustable) x 5.9 in
 Weight: 2.8 kg / 6.2 lbs
 Complies with: FINA, SSCH, AAU, NCAA and LEN rules





ALGE-TIMING has the perfect display system for every area of application, ranging from classical seven-segment displays to video walls. The displays can be customized to the individual requirements.

Numerical LED Display Systems

The seven-segment display boards are ideally suited for indoor and outdoor.

Full Color Video Walls

ALGE-TIMING offers large scale of LED video walls that are designed for use in sports facilities. For more information please contact your ALGE-TIMING dealer.

Seven-Segment LED Display Boards

The display boards D-SWxx are especially designed for indoor and outdoor use. They are controlled by TimeManager TM-SWIM, Timy3 or multisport controller D-CKN. All LED display systems are assembled with extra bright LEDs with an operational period of more than 100,000 hours. Displays with 57 to 600 mm figure height are available.

Figure heights for indoor systems:

57, 100, 150 and 250 mm

Figure heights for outdoor displays:

80, 150, 250, 450 and 600 mm

D-1xSWxx-8-(IO)

Single-line display board for rank, lane and time. The results of all swimmers can be shown alternating. The optional water polo control terminal D-CKN can be used to show match time and goals (0 to 9).



example: D-SW25-8-O

D-XxXxSWxx-7-(IO)

In order to show the time for every lane, multiline display boards with varying configurations are available. The optional water polo control terminal can be used for showing the match time, goals, and penalty times.



example: D-2x4xSW25-7-O

D-1xSWxx-5-(IO)

This additional display offers the complete overview of the competition and shows not only the name of the competition but also the heat number. This option can be integrated into every display.

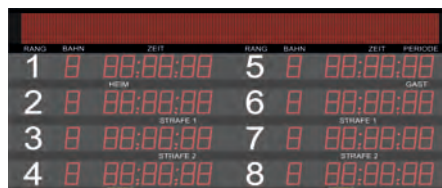


example: D-SW25-5-O

Info Display Systems

D-RTNMxx-x-(IO)

The D-RTNM full matrix display systems offer unsuspected display possibilities. In addition to competition name, heat number and name of swimmer, this display can also be used for promotion: graphic animations and running texts are available at any time by mouse click.



example: D-RTNM-XX-X-O

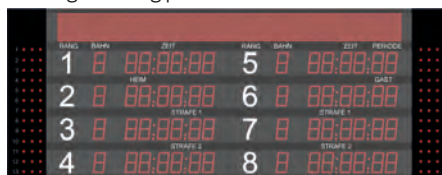
Personal Foul Module for Water Polo

D-WPF15-(IO)

- LED diameter: 5 mm
- ED cluster diameter: 20 mm
- number of LEDs per point: 5
- dimension: 400 x 1,100 x 70 mm per side
- weight: 10 kg per side

D-WPF25-(IO)

- LED diameter: 5 mm
- LED cluster diameter: 35 mm
- number of LEDs per point: 10
- dimensions: 500 x 1,400 x 70 mm per side
- weight: 15 kg per side



example: D-WPF25-O

All display boards are available as outdoor and indoor models.



seven segment LED display board



seven segment LED display board with LED matrix display board D-RTNM (top)

SWIMMING

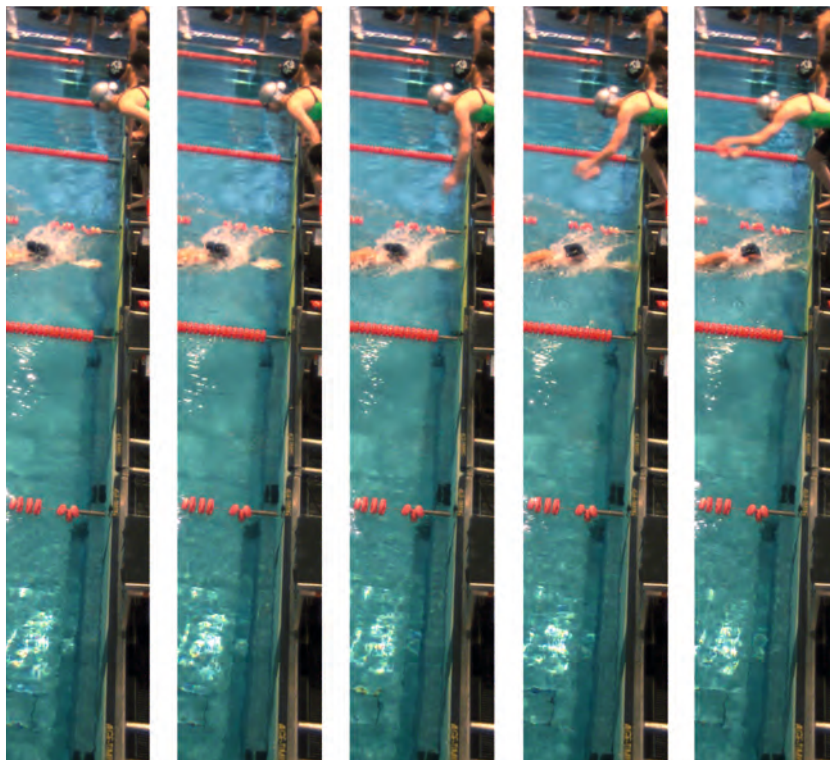
OPTIc3 Video Backup



OPTIc3 Video Backup

The ALGE-TIMING photo finish system OPTIc3 can record. All movements in the start and finish area in 2-D mode with 100 pictures per second. These recordings are an independent backup for the timing and can be used as evidence in case of a protest. This can especially be helpful for relay take-offs.

The pictures are stored on the hard disk of a PC. The IDCam software assists in evaluating them quick and clearly. One camera can cover up to four lanes.



Standard network

It is a simple way to connect almost every PC via Ethernet or WLAN.

Automatic Iris Adjustment

With the motor zoom of ALGE-TIMING you can access functions such as auto-focus and automatic iris adjustment.

Live View

The camera image can be viewed via WiFi on a mobile phone or tablet. This allows to adjust the lens of an OPTIc3 camera that is placed far away from a PC and has no motor zoom in an easy, fast and precise way.

2-D Image Adjustment

With the new 2-D image adjustment (maximum 2,016 x 360 pixels), you can accurately align the camera on the finish line in a very short time.

High-Speed Camera with 2-D Images

With 2-D mode with 100 Hz (100 fps) and full-screen mode, the OPTIc3-PRO is ideal for sports such as swimming and rowing. Since the OPTIc3 has a built-in timing device, exactly synchronized 100 frames per second can be guaranteed.

PC Software

The modern, powerful evaluation software for the OPTIc3 enables quick and easy results. It is also possible to record on one PC and execute the evaluation on another. Following operating systems are supported: Windows 7, Windows 8.x, Windows 10, Windows 11 (x86 or X64)

Technical Facts:

vertical resolution:	up to 2,016 pixels
scan rate (fps):	up to 30,000 frames per second
	up to 100 pictures with a resolution of 1024 x 768 or 2016 x 360 Pixel
recording time:	unlimited, depends on PC hardware
timing:	temperature compensated quartz oscillator TCXO, +/-0.06 ppm at 25 °C (0.0002 s/h)
power supply:	PoE+ or 9- 13.4 VDC
temperature range:	-20 °C to +50 °C





ALGE-TIMING has developed a special Timy3 timing program for swim training. The program has specific measuring features for two training lanes.

The following measured data is available:

Individual training

Reaction time	time after the swimmer puts pressure on the starting platform
Duration of pressure	duration of jump phase
Block-off time	time after the swimmer leaves the starting platform
Touch 1	first touch
Turn time	time from touch until leaving the touchpad
Touch 2	etc.

Relay training

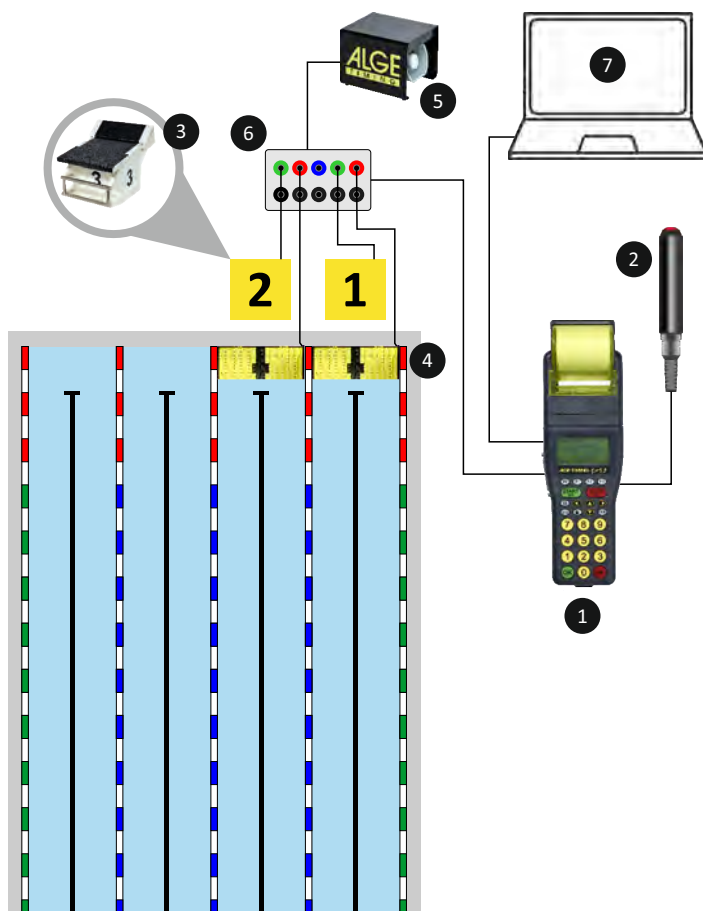
Reaction time	time after the swimmer puts pressure on the starting platform
Block-off time	time after the swimmer leaves the starting platform
Touch 1	first touch
Reaction time	time after the swimmer puts pressure on the starting platform
Block-off time	timer after the swimmer leaves the starting platform
Touch 2	etc.

```

ID:      1/1
Freestyle
T:02 Touches
START EXT
15:42:04.380
L1 SB+0.17 0.45 +0.62
L2 SB+0.14 0.56 +0.69
L2 TP 001      27.35
L2 Duration    0.86
L1 TP 001      28.17
L1 Duration    0.64
L2 TP 002      1:00.14
L1 TP 002      1:00.45
  
```

```

ID:      2/1
Freestyle Relay
T:04 Touches
START EXT
15:42:04.380
L1 SB+0.25 0.40 +0.65
L2 SB+0.28 0.44 +0.72
L2 TP 001      27.35
L2 SB-0.25 0.30 +0.05
L1 TP 001      28.17
L1 SB-0.15 0.25 +0.10
  
```



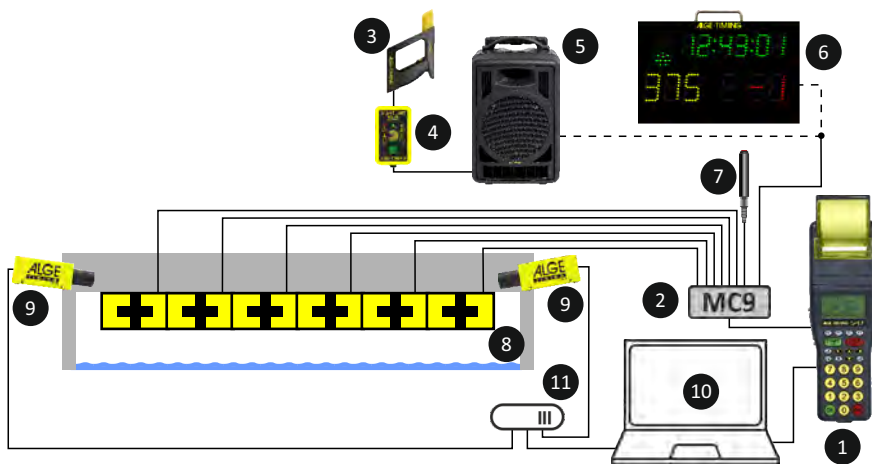
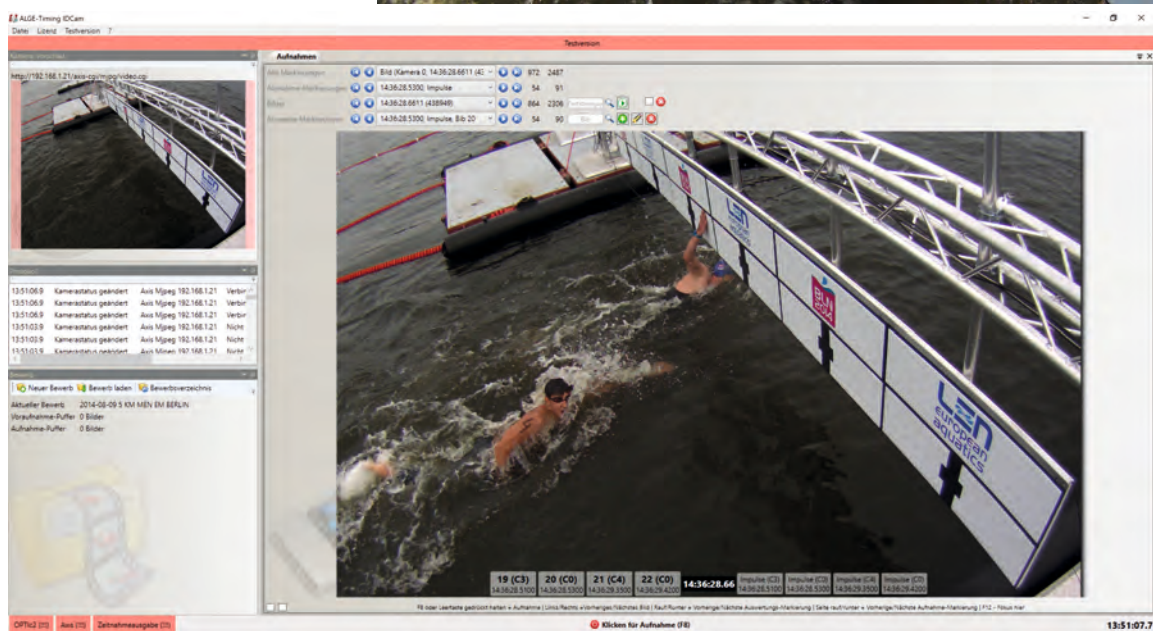
- 1 timing device Timy3 WP
- 2 push button 023-02
- 3 start block SO5 / SWR7 / SWT7M
- 4 touchpad TP1980C / TP2400C
- 5 speaker SPP2
- 6 connection box MC2-S
- 7 PC for evaluation

SWIMMING

Open Water Swimming



For open water swimming competitions, the combination of several small touchpads and finish monitoring with OPTic3 or IDCam is ideally suited. It is then easily possible to read the start numbers of the swimmers from the recorded high-resolution pictures including day time.



- | | |
|----------------------------------|--|
| 1 Timing Device Timy3 WP | 7 Push Button 023-02 |
| 2 Multichannel MC9 | 8 Touchpad CM30/100 (6 pieces) |
| 3 elect. Startgun e-start | 9 High Speed Camera OPTic3 or IDCam |
| 4 Start Unit SU3 | 10 PC for OPTic3 or IDCam |
| 5 Speaker System BANG2 | 11 Switch with PoE |
| 6 Start Clock ASC | |

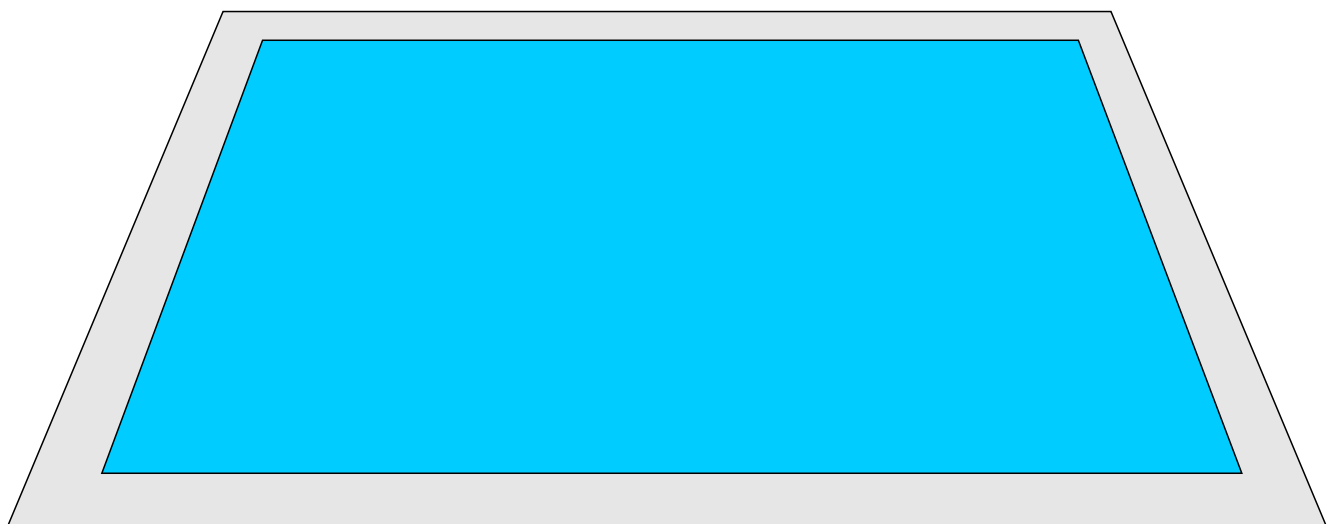
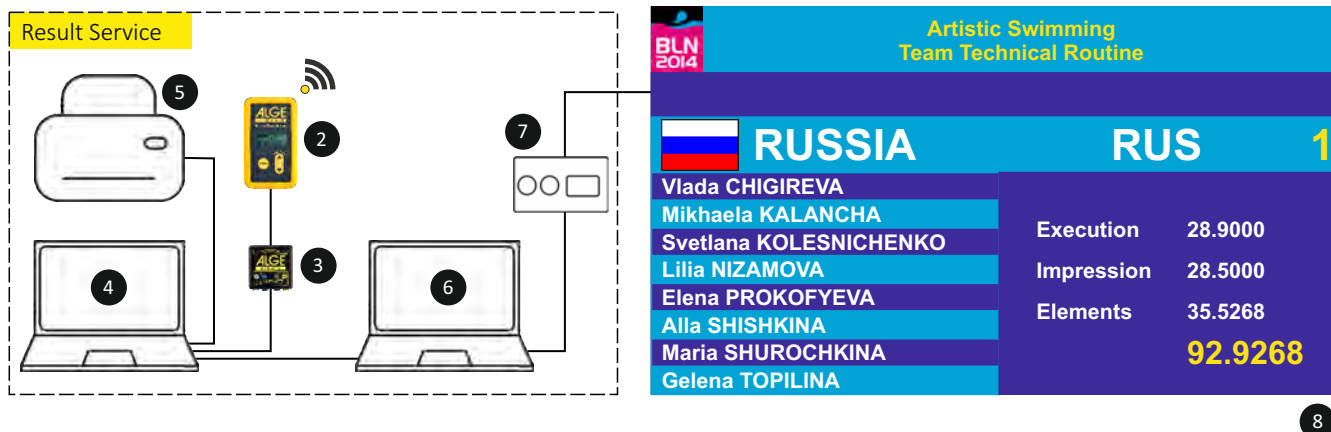


ARTISTIC SWIMMING



The unique ALGE-TIMING Wireless Timing Network guarantees safe data transmission and simple installation of the system for artistic swimming competitions.

The evaluation software complies with the requirements of the FINA and can control ALGE-TIMING video walls.

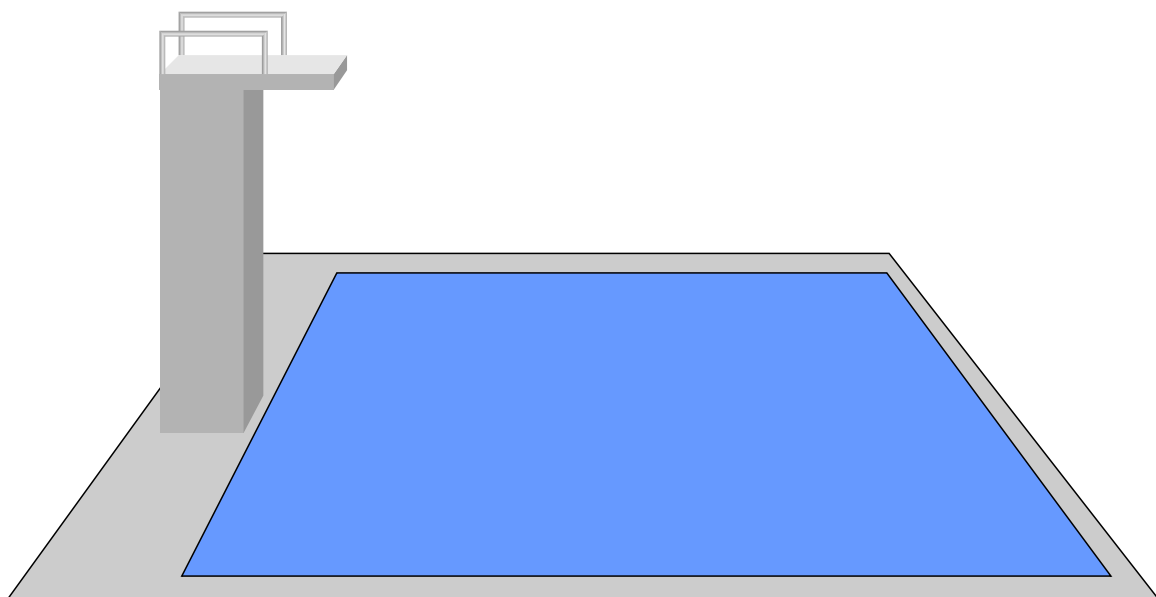
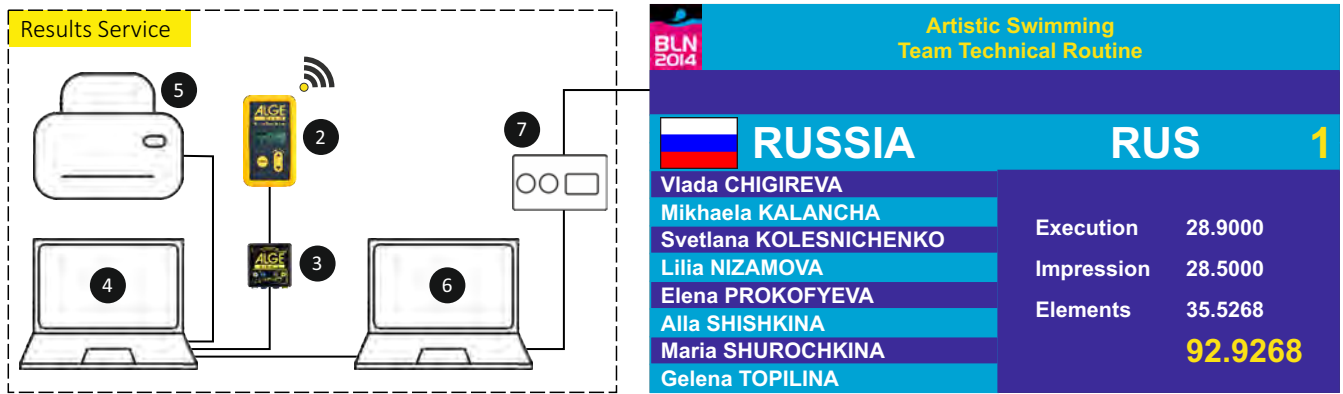


- 1 Timy3 W (one per judge)
- 2 wireless timing network WTN
- 3 adapter USB-WTN
- 4 notebook for result service
- 5 printer
- 6 notebook for video wall
- 7 video wall controller
- 8 video wall



The scoring system for diving is based on the unique ALGETIMING Wireless Timing Network. This ensures safe data transmission and easy installation of the system.

The evaluation software complies with the requirements of the FINA and can control ALGE-TIMING video walls.



- 1 Timy3 W (one per judge)
- 2 wireless timing network WTN
- 3 adapter USB-WTN
- 4 notebook for result service
- 5 printer
- 6 notebook for video wall
- 7 video wall controller
- 8 video wall



WATER POLO

Display Boards



Model D-S15BP2W

- figure height: 150 mm
- dimensions: 1,400 x 1,400 x 70 mm
- weight: 40 kg

Model D-S15-5W

- figure height: 150 mm
- dimensions: 2,000 x 1,400 x 70 mm
- weight: 55 kg

Model D-M5SW

- figure height: 250 mm (time and score) and 150 mm (penalties and period)
- dimensions: 2,500 x 1,000 x 70 mm
- weight: 80 kg

The following is shown on the display board:

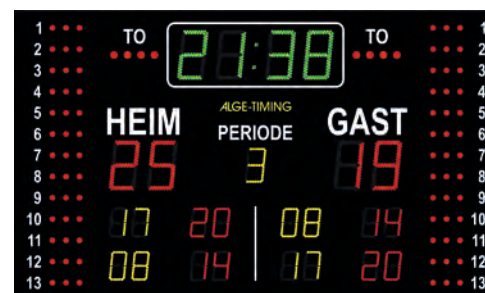
- running time: 99:59 minutes up/down (green figures); last match minute is shown in tenths of a second
- time of day can be shown in match time field
- scores: 0 to 99 each side (red figures)
- period: 0 to 9 (yellow figures)
- time-out: 4 red LED points for each team
- penalties: 2 penalties for each team: 0 to 59 seconds (red figures)
- layer number: 0 to 99 (yellow figures)
- personal fouls: 39 red LED points each team (models D-S15-5W, and D-M5SW)



model D-S15BP2W



model D-S15-5W



model D-M5SW

Technical Data

- power supply: 110- 220 VAC / 50 Hz
- horn
- D-CKN terminal with LCD display

Optional

- wireless data transmission
- outdoor models have at the end of the code -O; e.g. D-M5SW-O



operating console D-CKN

WATER POLO

Shot Clocks



model D-SC25W-PH



D-SC15W-PH

- attack time (2 figures): 150 mm
- dimensions: 340 x 250 x 70 mm
- weight: 1.5 kg each side

D-SC25W-PH

- attack time (2 figures): 250 mm
- dimensions: 450 x 350 x 70 mm
- weight: 3 kg each side

model D-SC45GT25W-PH



D-SC25GT15W-PH

- match time (3 figures): 150 mm
- attack time (2 figures): 250 mm
- dimensions: 550 x 550 x 70 mm
- weight: 6 kg each side

D-SC45GT25W-PH

- match time (3 figures): 250 mm
- attack time (2 figures): 450 mm
- dimensions: 850 x 900 x 70 mm
- weight: 15 kg each side

Technical Data

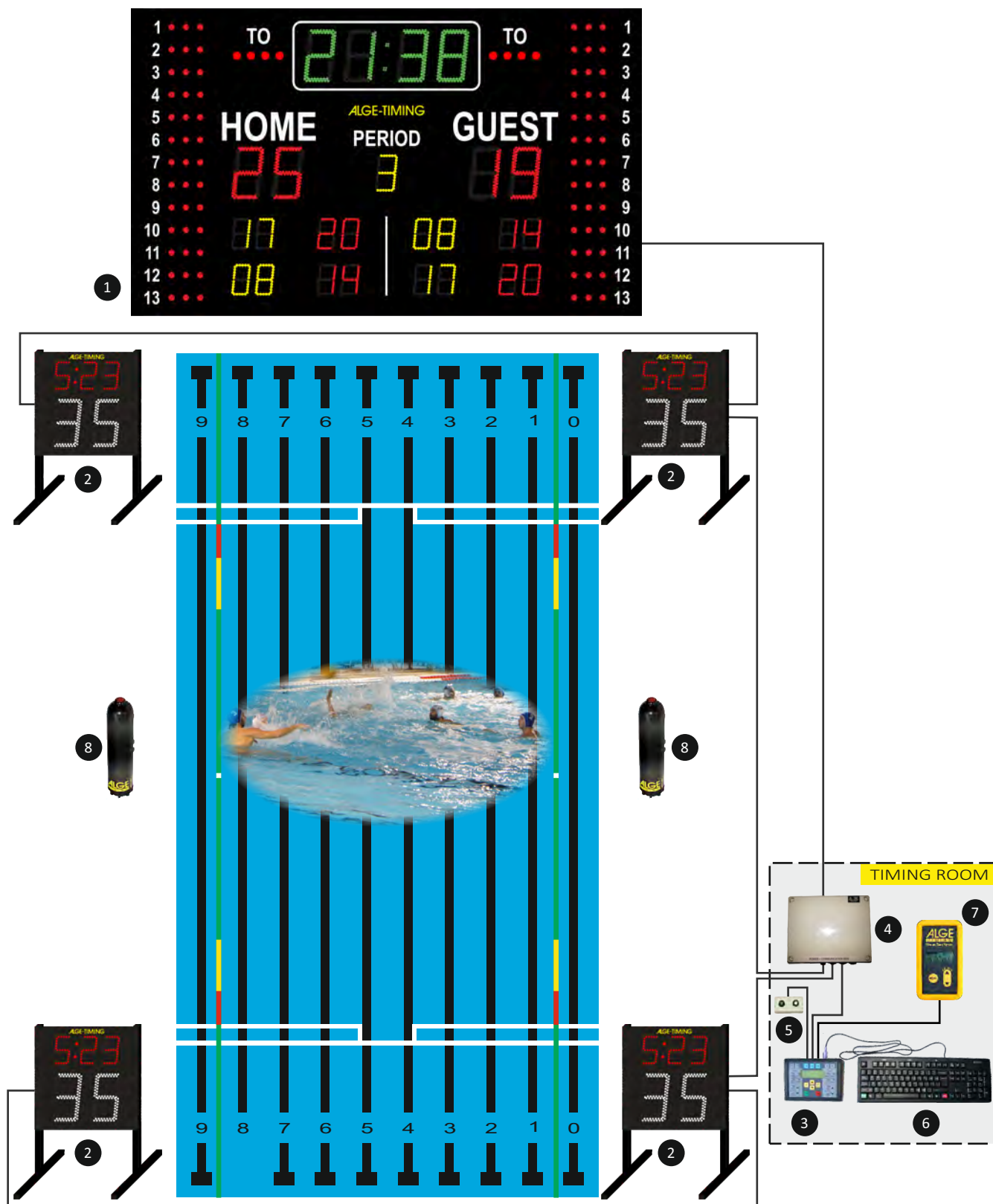
- set consisting of 2 attack time display boards with horn
- 150, 250, or 450 mm figure height, on request up to 1,000 mm possible
- models for indoor and outdoor
- power supply with 24 VDC from main display board
- only works with ALGE-TIMING water polo display board with D-CKN terminal
- cable must be ordered separately, 200-XX are in use
- shot clocks meet safety requirements for operation in swimming pools

Optional

- wireless data transmission and built in rechargeable battery
- outdoor models have at the end of the code -O; e.g. D-SC15W-PH-O

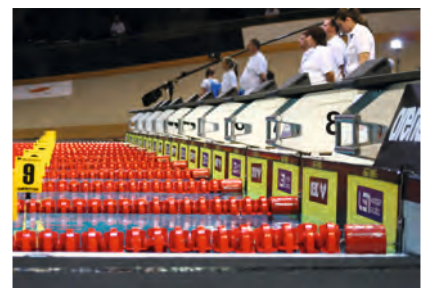
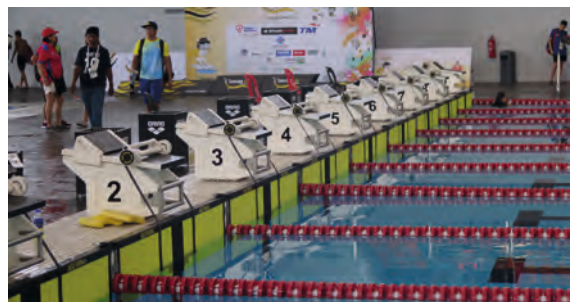


WATER POLO



- 1 water polo score boards (e.g. D-M4SW)
- 2 shot clock (e.g. D-SC25GT25W-PH)
- 3 operator consol D-CKN
- 4 power and communication box
- 5 shot clock keyboard D-CKA2
- 6 keyboard D-CKN-KB
- 7 wireless timing network WTN
- 8 radio push button WTN-PB

SWIMMING





SWIMMING

Device Overview



TimeManager TM-SWIM

The TM-SWIM timing device is the key component of a fully automatic timing system. It collects all timing data and sends them to the PC with the SwimTime timing program. The integrated battery guarantees uninterrupted operation of the key components even in case of power outage.



Timy3 WP

Universal timing device with 9 channels (start and 8 lanes) For swimming, each lane is triggered with one separate push button. Ideal timing device for semi automatic timing systems or training.



Printer P6-8

The log printer prints all times that are received by the timing device so that the data of the competition can be checked at any time.



Speaker SPA2 and SPP2

One speaker is installed for each lane, alternating active and passive speakers. These speakers are used for the starting sound and commands of the starter to the swimmers.



Speaker System BANG 2

80 W speaker system and amplifier in one casing. It triggers the start by cable or radio (built in radio system WTN). Start commands are transmitted by the Start Unit SU3 or headset BANG-HS from the starter.



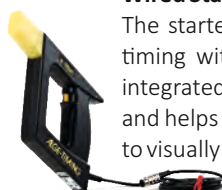
Radio Headset BANG-HS

Radio headset microphone for using the BANG2 as speaker.



Start Flash FLASH XL

The FLASH XL provides fair starting conditions for hearing impaired swimmers.



Wired Starting Device e-Start

The starter triggers by cable connection the timing with the starting device e-Start. The integrated flash allows an exact manual timing and helps swimmers with hearing impairment to visually register the start impulse.



Radio Starting Device e-Start W

The starter triggers by radio connection the timing with the starting device e-Start. The integrated flash allows an exact manual timing and helps swimmers with hearing impairment to visually register the start impulse.



Start Unit SU3

The Start Unit is a device for the starter. The integrated microphone allows making announcements to the swimmers. The start button can be used to trigger the start.



Push Button 023-02 or 023-10

The push button is used to start or stop the time of the swimmer manually. The push buttons are solid and waterproof with a 2 m or 10 cable.



Radio Push Button WTN-PB

The radio push buttons are used to start and stop the time for semi automatic wireless timing systems. Each lane requires one WTN-PB, one is additionally needed for the start.



Touchpad TP1890C or TP2400C

Patented, anti-slip and reliable touchpad for swimming. Available in sizes for 2.5 m wide lanes and 2 m wide lanes.



Terminal SWT3

One terminal per lane and touch side is necessary. The terminals are numbered automatically by the timing device. They have the following connections: 1 x touchpad, 3 x push button, 1 x starting platform.

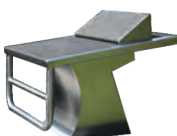
SWIMMING

Device Overview



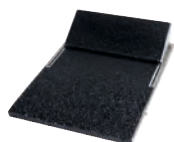
Starting Platform SO5

The starting platform SO5 made from plastic is characterized by modern design, adjustable footrest and integrated relay take-off sensor.



Starting Platform SO4

The starting platform SO4 made from stainless steel is characterized by exclusive design, adjustable footrest and integrated relay take-off sensor.



Relay Take-off Sensor SWR7

with integrated, adjustable footrest for fixed installation on third-party starting platforms (fixing with screws).



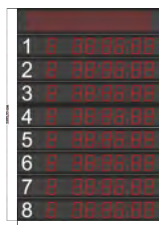
Relay Take-off Sensor SWR7M

with integrated, adjustable footrest for universal, mobile use on third-party starting platforms (fixing with a tension belt).



Back Stroke Aid BSA

for perfect back stroke starts, compatible with all starting platforms.



Display Boards

ALGE-TIMING offers different types of technology for displaying results. Everything is possible from simple numerical 7-segment-display boards to video walls.



Video Wall

Video walls are available with a wide variety of dimensions and resolutions. They fulfill many display tasks in a stadium: start list, result list, advertising, movies, etc.



LED-Display Board D-LINE

numerical display board with red LEDs for showing the time (e.g. D-LINE250-O-6-E0).



Radio Receiver WTN-DB

Radio receiver for the data of a display board.



Shot Clock

7-segment LED-display board to display the offense time. Depending on the model, the game time is displayed as well.



Connection Cable for 8 Lanes MC8-S2

Cable from the timing device Timy3 WP to the swimming lanes. One connection-point is situated between two lanes to connect a push button 023-02 for each lane.



Timy3 W

Terminal for entering results for synchronized swimming and diving. Data are sent to the evaluation-PC by radio. The device can also be used as a timing device for training.



Wireless Timing Network WTN

Radio system patented by ALGE-TIMING is special developed for timing. In synchronized swimming and water polo, it is required for communication between the evaluation PC and the Timy3 W terminals.



Adapter USB-WTN

to connect the WTN at the PC using the USB connection.



Video-Backup OPTic3

High-speed video system with 100 pictures per second as backup system for competitions in swimming and open water.



Video-Backup IDCam

High-speed video system with up to 180 pictures per second as backup for open water.



Start Clock ASC3

The start clock ASC3 is used for the interval starts of open water swimming competitions. The time of day, ID-number and an adjustable countdown are displayed.

ALGE-TIMING
Rotkreuzstrasse 39
6890 Lustenau, Austria
<https://alge-timing.com>

