



The ALGE-TIMING starting block SO5 is made of easy-care plastic and has integrated false start detection for relay starts and an adjustable footrest.

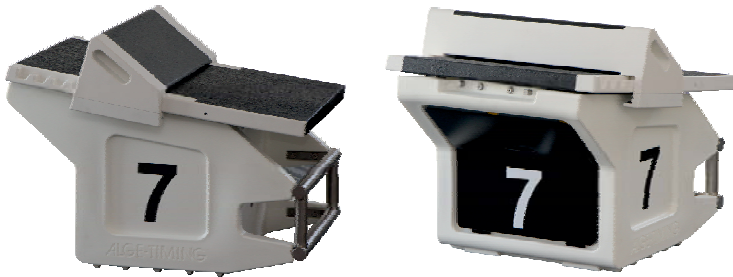
With the SO5 you can check that the swimmer does not start before the other touches the touchpad in a relay race. In conjunction with the latest SWT3 it is possible to measure the duration of the jumping.

Starting Block SO5:

The SO5 is made of LDPE (low-density polyethylene) and supplies relay exchange times, block-off times or reaction times. The adjustable footrest enables the swimmers to adjust the distance to the front-edge to have the perfect start position for the step-start. The SO5 is built for constant use in indoor and outdoor pools.

Technical Data:

Measuring system: integrated sensor for timing
Adjustable Footrest: adjustable in 6 positions
Material: LDPE (low-density polyethylene)
Dimensions: 740 x 560 x 400 mm
Weight: 35 kg
Complies with FINA, SSCH, AAU, NCAA and LEN rules



Relay-Take Off Sensor SWR7:

The SWR7 is made from high quality stainless steel 1.4404 and supplies relay exchange times, block-off times or reaction times. The SWR7 can be fastened to the starting blocks using screws (model SWR7) or straps (model SWR7M). The especially non-slip, ALGE designed surface is indestructible and does not change its features even after many years of hard usage.

The adjustable footrest can be adjusted easily by the swimmers in the common steps.

Technical Data:

Measuring system: integrated sensor for timing
Material: stainless steel 1.4404, surface treated
Dimensions: 740 x 560 x 40 mm
Weight: 26 kg
Complies with FINA, SSCH, AAU, NCAA and LEN rules

