

ALGE

TIMING



THE SPORTS
TIMING EXPERTS

Start Judge SJ2



START JUDGE SJ2

The Start Judge SJ2 is a false start system for athletics to monitor the start of running competitions up to 400 m. It consists of the Start Judge transport cart SJT2 with integrated controller and battery. The transport cart can store the complete system.

The sensors SJS2 are mounted on each starting block. The integrated loud speaker system enables the starter to give commands to the athletes. The start tone (simulated start shot) is released through the speaker integrated in the start sensor and the BANG2. By this, all runners can hear the start tone at the same time. With a radio push button WTN-PB one can move around and still trigger a false start at any time.

Cable Version SJ2-C:

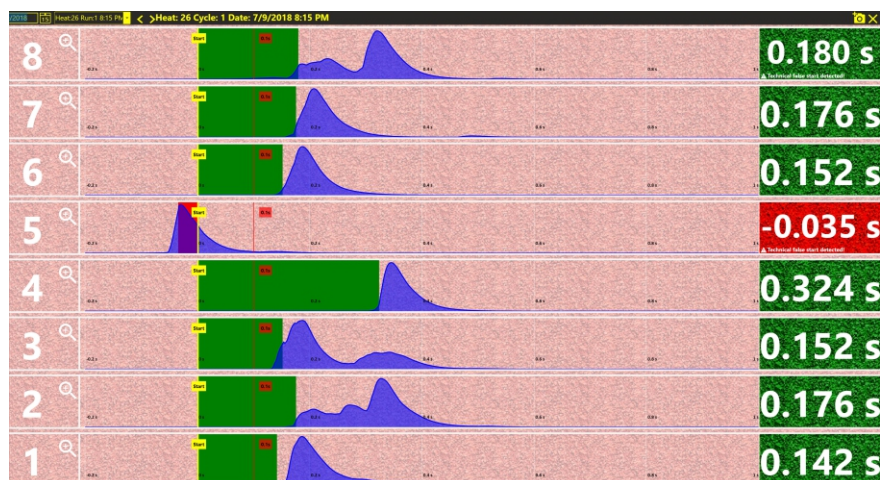
This system requires a cable (KT313-30) from the Start Judge transport cart to the first sensor SJS2 (first starting block). The sensors of the further lanes are one after another connected with cables 139-12. With the Start Unit SU3 and the connected e-Start and HS3-2, the starter can communicate with the timing room or give starting commands.

Radio Version SJ2-W:

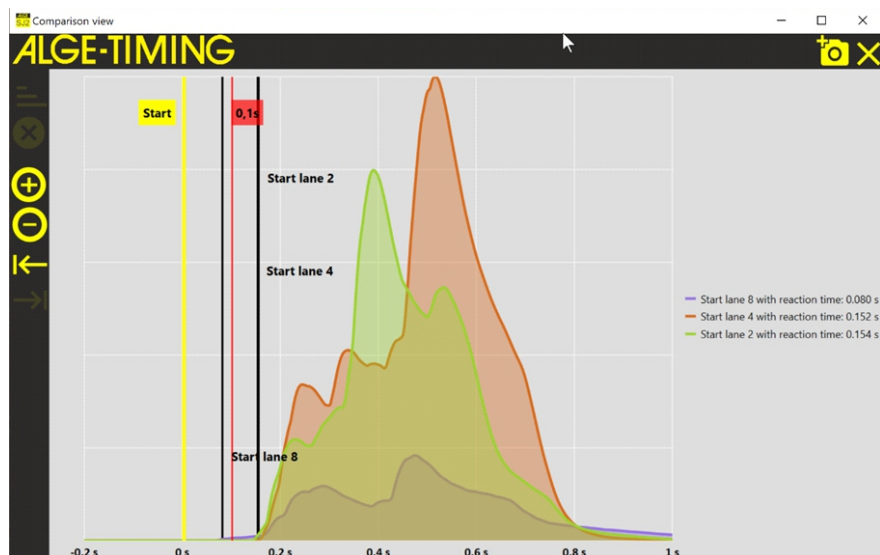
This system is wireless, i. e. all components communicate via radio. For this radio communication, the ALGE-TIMING WTN radio system is used. Oral commands for the athletes are made through the headset BANG-HS and released via the BANG2. Also the start signal is send by radio to the timing system.



The SJ2 false start system does not require any operation during the start process. The measurements are made automatically. Each start sensor collects the start data and transmits them to the Notebook in the Start Judge Cart, which is connected via a USB cable.



The starting curves of all participants (lanes) are visible on the screen of the Notebook. The picture on the left shows a typical take-off process in which track 5 caused a false start. All other tracks had a valid start.



It is possible to display the star-graphs of selected runners (lanes) enlarged and on top of each other.

START JUDGE SJ2



The False Start System Start Judge Sj2 is certificated by the „World Athletics“ (former IAAF).

International Association of Athletics Federations



ALGE-TIMING
Att. Mr Albert Vetter
Rotkreuzstrasse 39
A-6890 Lustenau
Austria

6 July 2018

Dear Albert,

Technological devices other than the reaction time measuring module of the Start Information System (SIS) (e.g. Timing Systems, Wind Gauges, Distance Measuring Equipment etc.) used in athletics are not issued a certificate by the IAAF and therefore no certified lists for such devices are available.

All measuring equipment used in IAAF competitions shall be manufactured and calibrated according to international standards. The accuracy has to be guaranteed by the manufacturer according to the relevant international standards and shall have been verified by an appropriate organisation accredited by the national measurement authority.

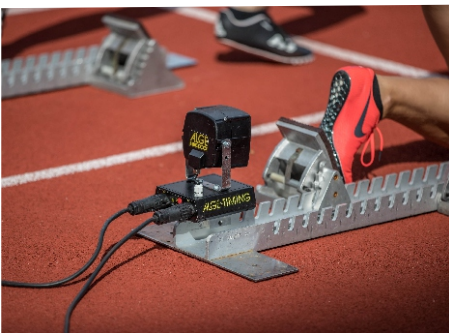
To our knowledge and experience, the equipment of ALGE-TIMING GmbH meets this condition and is also successfully used in international athletics competitions organised under IAAF Rules and Regulations.

The "Start Judge SJ2" accelerometer based reaction time measuring module of the SIS by ALGE-TIMING GmbH (firmware V18.61) was studied and tested according to the established IAAF criteria and was found to have met the current requirements for an IAAF Product Certificate.

Sincerely,

Imre MÁTRAHÁZI
Competition and Events Department, Technical Manager

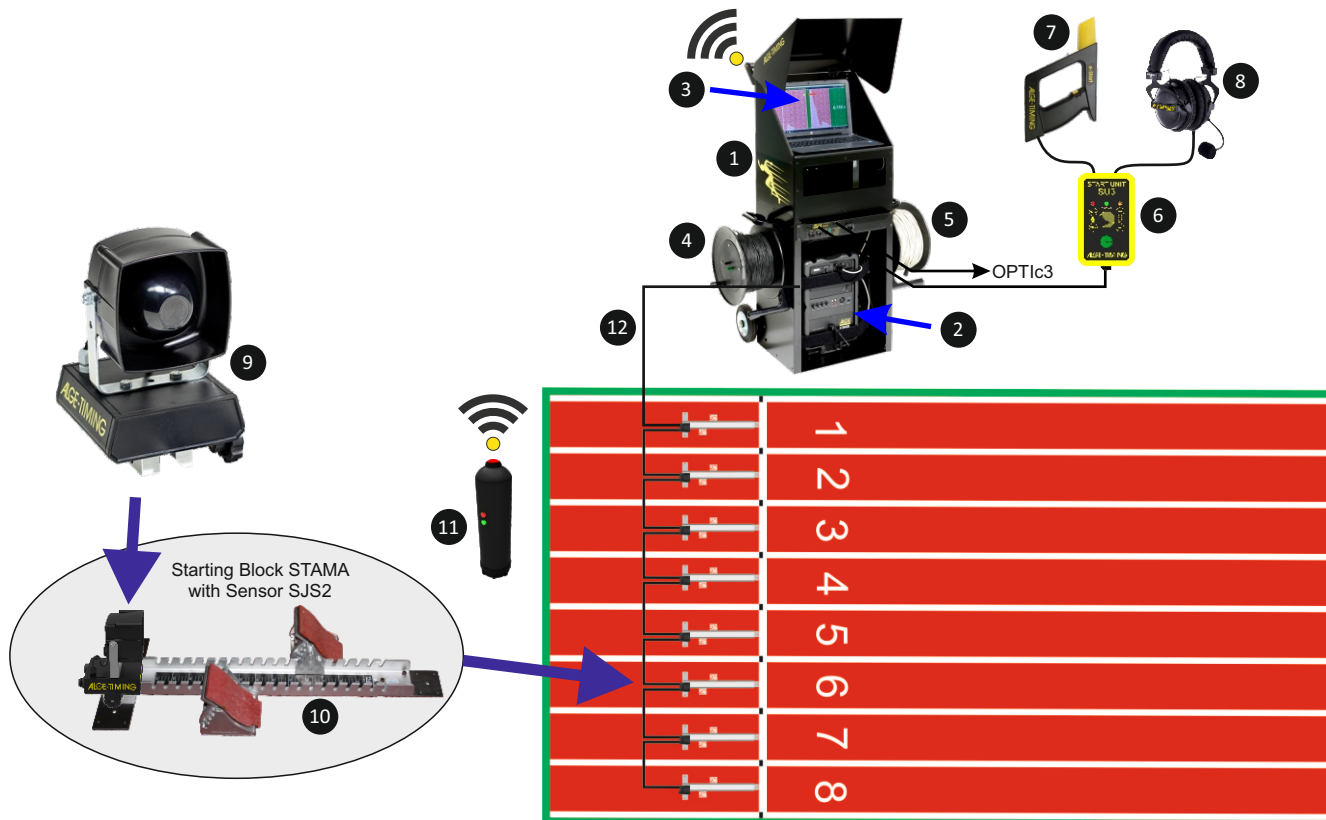
4-8, Quai Antoine 1er | BP 209 | MC 98007 | Monaco Cedex
Tel: +377 93 10 98 88 Fax: +377 93 15 15 15 www.iaaf.org



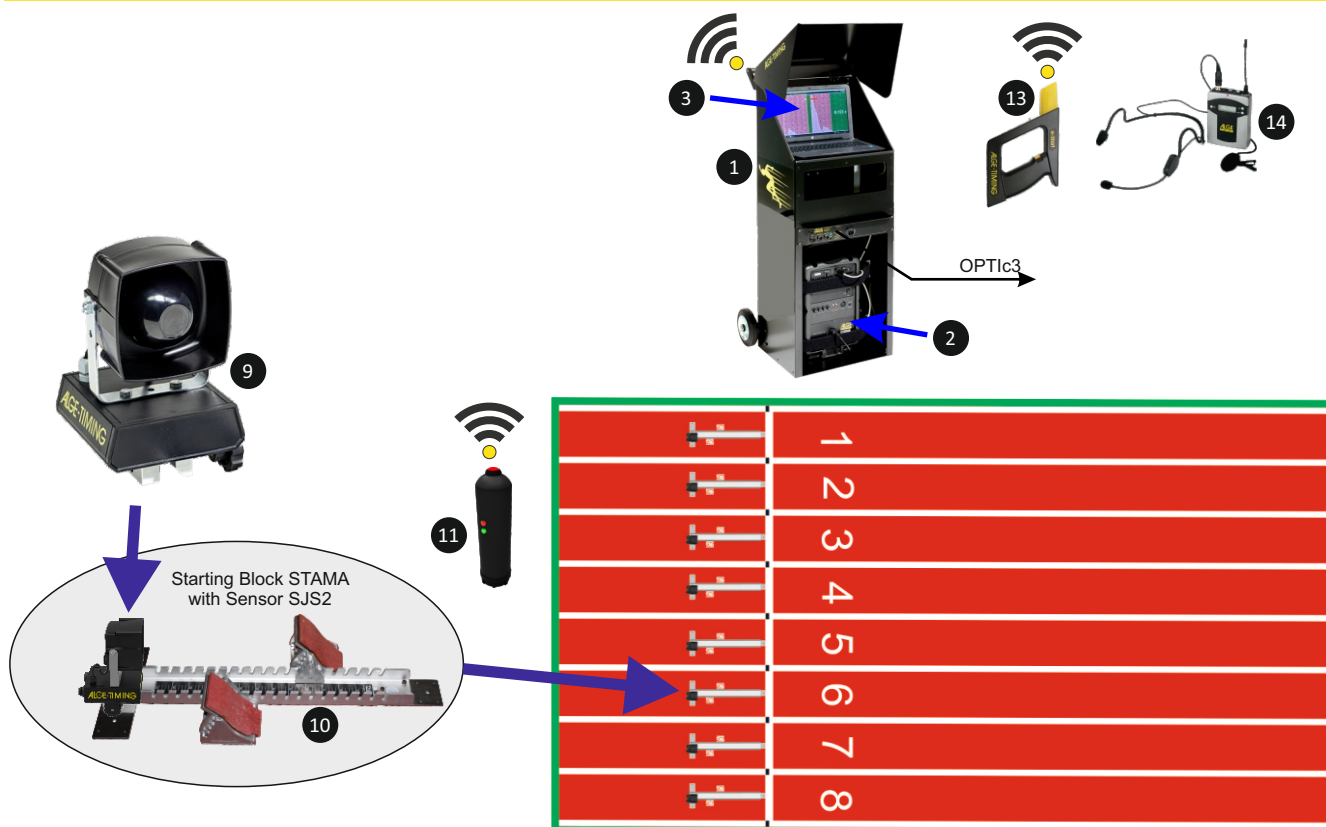


START JUDGE SJ2

Cable Version SJ2-C



Radio Version SJ2-W



START JUDGE SJ2



The Start Judge Cart SJT2 has a holder to insert a parasol to protect the operator and devices from sun and rain.



The false start sensor SJS2 is ready to work with cable or by radio (Wireless Timing Network).



The BANG2 is a amplifier and speaker. It is used to output the start sound, false start sound and as well to give oral start commands to the competitors.



1 Start Judge Cart SJT2
with built in controller and backup battery



2 Loud Speaker System BANG2
80 W loud speaker system and amplifier in one casing, integrated in the Start Judge Cart SJT2



3 Notebook for Start Judge
with the Start Judge SJ2 software to operate the system



4 Cable Reel KT150H *
with 2-pole connection cable (150 m) to timing



5 Cable Reel KT313-30 *
with connection cable (30 m) between Start Judge and false start sensor SJS2 of the next lane



6 Start Unit SU3 *
start device with integrated speech amplifier



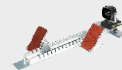
7 Electronic Start Device e-Start *
for triggering the start signal with integrated flash light and connection cable for the Start Unit SU3



8 Headset HS3-2 *
for the communication between starter and timing room or start commands to the athletes through the loud speaker system BANG2



9 Start Judge Sensor SJS2
sensor for each lane, mounted at the starting blocks



10 Starting Block STAMA
World Athletics certified starting block for each lane



11 Radio Push Button WTN-PB
for triggering a false start by the starter assistant



12 Cable 199-20 serves as connection from Start Judge cart to Start Unit SU3



13 Electronic Start Device e-Start W **
for triggering the start signal with integrated flash light, battery and radio system WTN



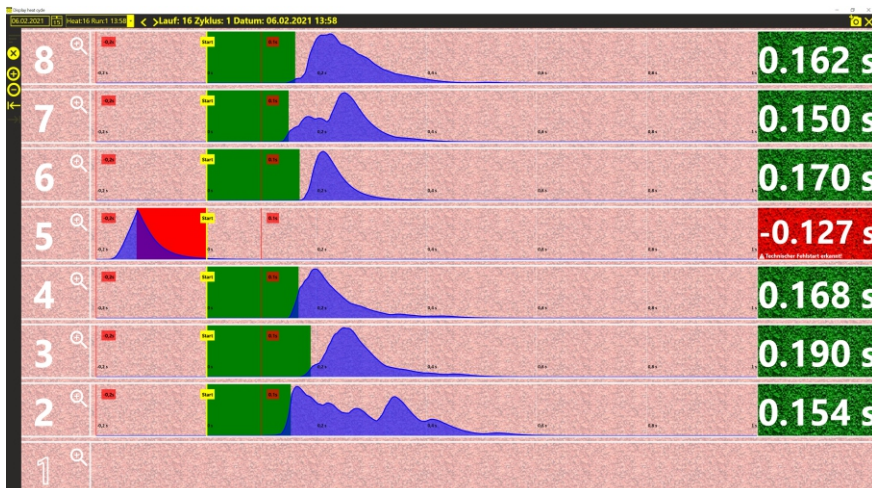
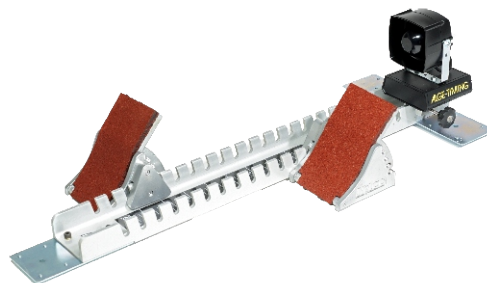
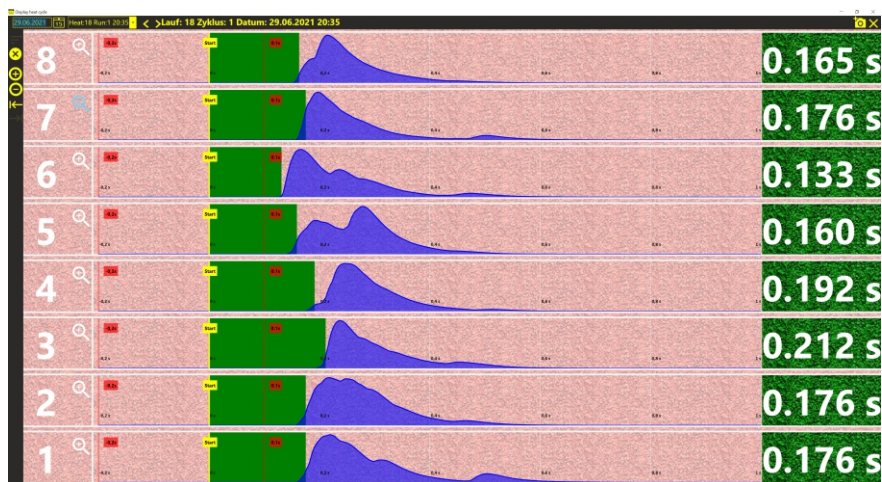
14 Radio Microphone BANG-HS **
head band with radio microphone for communication through the BANG

* only for cable version

** only for radio version



START JUDGE SJ2



TRAINING SYSTEM START JUDGE SJ2-T



The Start Judge SJ2 can be used with reduced equipment to train the start. It is possible to set it up for 1 or up to 10 tracks. The start sensor transmits the data of the start curve by including the reaction time by radio to the PC. Because it works wireless the setup is easy and fast. It has a training mode integrated that allows an athlete to train by himself without any starter.

SJ2-T with Start Operator

- the start operator will give the start commands
- if the athletes are ready the start operator presses the button of the radio push button WTN-PB to trigger the start signal
- the athlete can now check his reaction time and his start curve on the PC-Screen

SJS-T using the Automatic Start Mode

- click with the mouse at the PC on the automatic start button
- after 15 seconds a voice from the Start Judge Sensors will announce "Take your marks!"
- after 5 seconds the speaker will output "Get Set!"
- after a random time of 2 to 4 seconds the start shoot will appear
- the athlete can now check his reaction time and his start curve on the PC-Screen

Components of the Trainings False Start System SJ2-T:

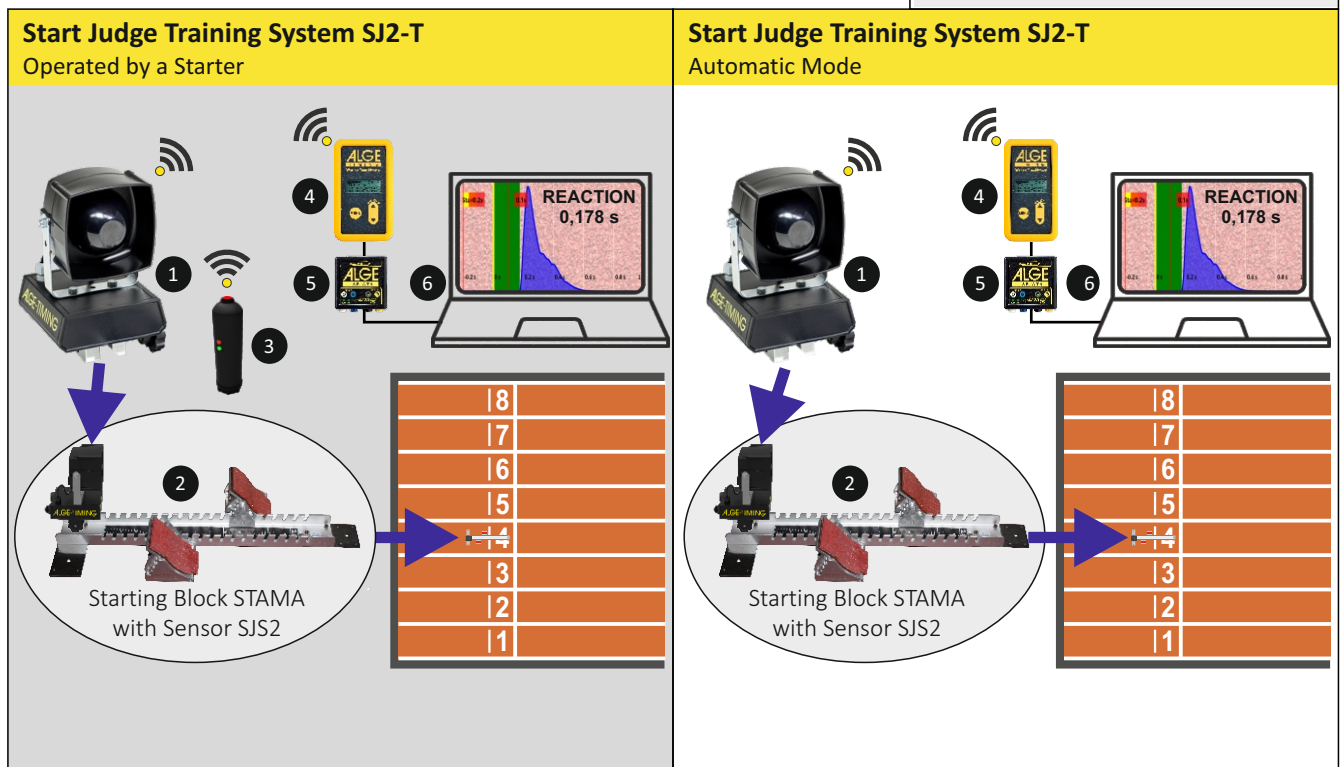
- Start Judge Sensor SJS2
- Wireless Timing Network WTN
- Radio Push Button WTN-PB
- Converter USB-WTN
- Power Supply PS24-70

Additional Equipment Needed:

- Notebook for Evaluation
- Starting Block STAMA (or other)



- 1 Start Judge Sensor SJS2
- 2 Starting Block STAMA
- 3 Radio Push Button WTN-PB
- 4 Wireless Timing Network WTN
- 5 Converter USB-WTN
- 6 Notebook for Start Judge SJ2-T



ALGE-TIMING
Rotkreuzstrasse 39
6890 Lustenau, Austria
www.alge-timing.com

