



PHOTO-FINISH OPTIc3-PRO

THE SPORTS TIMING EXPERTS

ALGE
TIMING

PHOTO FINISH OPTIc3-PRO



The OPTIc3-PRO photo-finish system is ready to take over the technical market leadership! It has the fastest scan rate (fps) on the market which qualifies the OPTIc3-PRO as perfect photo finish for any sport that depends on photo finish pictures to obtain precise results.

In addition, the OPTIc3-PRO has a 100 Hz 2-D full-frame mode which proves to be interesting for sports like swimming and rowing. Characteristics like 2-D picture, autofocus and auto iris guarantee a user-friendly system. The VoIP allows voice communication with the starter without using a headphone.

High Speed Capture | up to 30,000 fps

High Resolution | up to 2,016 pixels vertical resolution (+48% more than OPTIc2)

Standard Network Connection | use standard Ethernet or WLAN interfaces for data transfer. WLAN in camera included!

Easy 2D Picture Adjustment | with the new 2D setup mode (2016 x 360 pixels) you can align the camera to the finish line within one minute

Autofocus | with the motorized zoom you can use a sophisticated autofocus and auto iris function

Integrated WTN | wireless impulse and data transmission

eXtremLuX | various technologies to improve the picture at bad light conditions

Flicker Reduction | automatic suppression for 50/60Hz flickering

LiveView | adjust the camera with a live picture on your tablet or mobile via WLAN

High Speed 2D pictures | 100fps 2D pictures at 1024x768 or 360x2016 pixel resolution

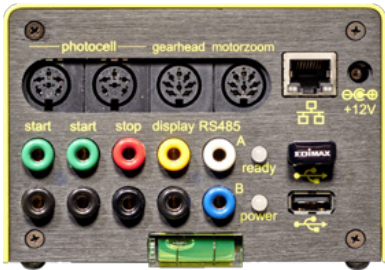
VoIP | speech connection to the starter directly from your PC

Motion Detection | automatic recording by Motion Detection

PC Software | state of the art evaluation software

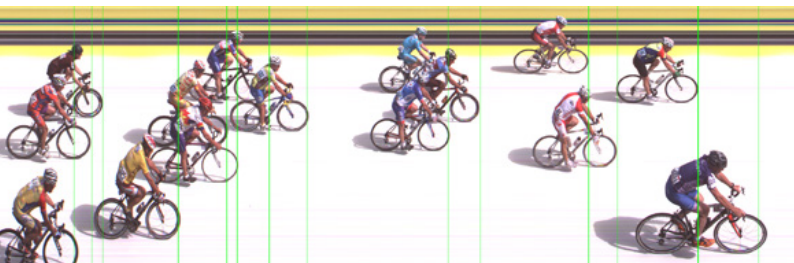


TECHNICAL DATA

Vertical resolution	up to 2016 pixels
Scan Rate	up to 30.000 fps
Recording Time	unlimited; depends on PC hardware and connection
Lens	C-Mount lens
Timing	TCXO: +/- 0.06 ppm@25°C (0,0002s/h)
	2 x start input (banana socket) 1 x finish input (banana socket) 2 x 3 channel input (DIN socket) 1 x display board (banana socket) 1 x motor zoom 1 x gearhead 2 x USB for WLAN 1 x RJ45 (Gigabit Ethernet) 1 x power supply
Connections	
Power Supply	PoE+ or 9 - 13.4 VDC
Temperature Range	-20°C to 50°C (90°F to 122°F)

ACCESSORIES

Manual Lenses	wide range of (zoom) lenses are available
Motor Zoom Lenses	two models are available: 12 - 75 mm or 16 - 160 mm
Gearhead 410	three-dimensional gearhead to adjust the camera
Gearhead 410E3	electronic controlled three-dimensional gearhead to adjust the camera controlled by the PC software
Camera Case WPC3-75	protects the camera if used outside in bad weather
Battery Backup BB1	battery backup for camera with integrated 12 VDC battery and charger.
KT-RJ45G90	90m Ethernet cable reel for mobile use
Transport case	the OPTIc3-PRO comes with a case



Dealer

Sportele Oy
Huotarintie 4
88600 Sotkamo
Finland
Tel: +35 8400 486 425
www.alge@alge-timing.fi