

The IDCam is a reliable and simple way to monitor the finish line. When an athlete crosses the finish line a series of high resolution pictures is taken and stored on the PC with the time of the day for each image.

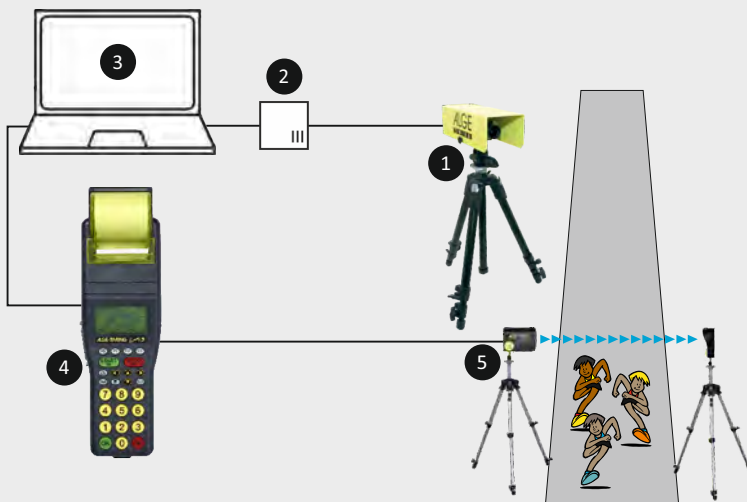
The IDCam can be connected to an ALGE-TIMING timing device. The photocell at the finish line starts the recording of the images by the IDCam. The images are automatically sorted with the correct ID-number if the number is entered in the timing device in advance.

The recorded images help determine the arrival order of the athletes at the finish line, correct the missing finish line arrivals and add the bib numbers, which can be read from the pictures.



Setup Example of the IDCam with a Timy3 WP:

IDCam with 20 m long Ethernet cable (can be up to 100 m long) with power supply POE. Connect the POE to the PC using a 3 m Ethernet cable. Connect the ALGE-TIMING timing device to the PC via RS232 or USB cable.



Setup:

Connect the IDCam by Ethernet cable (included 20 m cable, possible up to 100 m) with power supply POE. From here connect a timing device from ALGE-TIMING by RS 232 or USB.

Supported Timers:

- TdC8001 and TdC8000
- Timy3, Timy2 and Timy
- Timer S4
- Photo Finish OPTIc2 and OPTIc3
- High-Speed Camera OPTIc3 (2D mode)
- manual recording via PC keyboard

Scope of Delivery:

- 5 Megapixel Network Camera
- zoom lens 4- 8 mm for camera
- 3 m CAT5 cable K-RJ45G03
- 20 m CAT5 cable K-RJ45G20
- POE Power supply
- PC Software



Optional Accessories:

- weather Protection WP-IDCam
- tripod TRI128 or TRIMAN
- ball joint 482
- cable reel KT-RJ45G90



The IDCam is the ideal addition to any ALGE-TIMING timing devices.

Technical Data:

Number of images:	up to 30 fps (5 MP), or up to 180 fps (HDTV 720p)
Picture resolution:	2,592 x 1,944 pixel (5 MP)
Connections:	camera IDCam to PC: Ethernet CAT5 cable up to 100 m length timing device with PC: RS232 or USB
Recording time:	endless, depending on the capacity of the PC's hard disk
PC operating system:	Windows 7, 8, 10, 11
Power supply:	POE: 90- 280 VAC

Example of cooperation between IDCam and Photo Finish

The IDCam is the ideal complementary device to the photo finish OPTIc3, because it controls the finish line recording, and

helps determine the bib numbers, from the finish line arrivals, in case these were not readable in the photo finish picture.

Cycling - Cooperation Between IDCam and OPTIc3

The example of a cycling finish arrival shows that together with IDCam and ALGE-TIMING photo finish OPTIc3, you have the ideal tool for evaluating the finish quickly and independently of the finish arrival judge.

The IDCam can be controlled via the OPTIc3.NET software running on the same PC as the photo finish software OPTIc3.NET, but it can also be installed on another PC on the same network.

The cyclist with ID-number 10 can not be identified in the photo finish picture. In the picture taken by the IDCam, the ID-number 10 is, however, clearly recognizable (see image below).

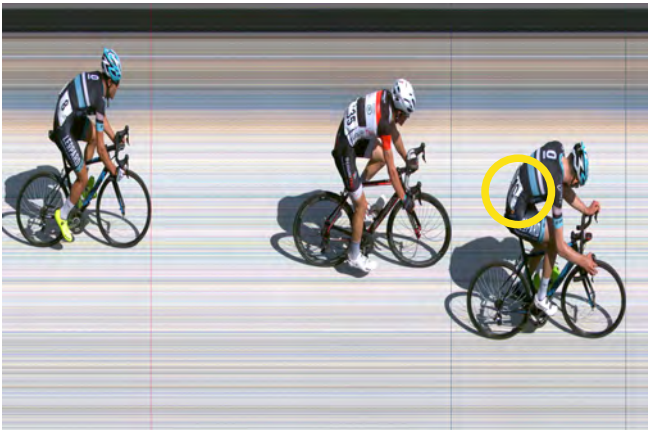


Photo Finish OPTIc3 image



IDCam image

Athletics - Cooperation Between IDCam and Photo Finish OPTIc3

The same cooperation between IDCam and OPTIc3, is the ideal tool for evaluating the finish arrival in athletics.

ID-number 180 and side number 6 is not readable on the photo finish picture, but in the picture of the ID-Cam the ID-number 180 and side number 6 is clear visible (see image below).

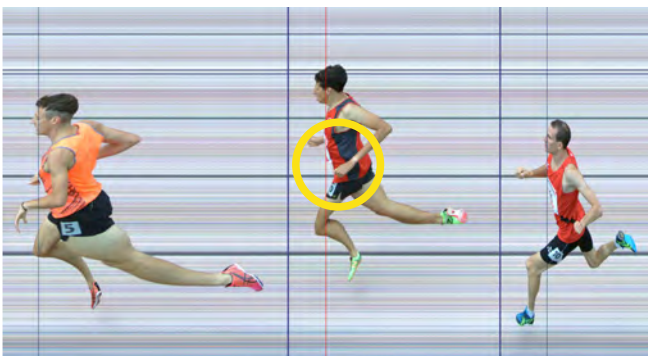


Photo Finish OPTIc3 image



IDCam image